

# Hortonworks Data Platform

## YARN Resource Management

(November 30, 2016)

## Hortonworks Data Platform: YARN Resource Management

Copyright © 2012-2016 Hortonworks, Inc. Some rights reserved.

The Hortonworks Data Platform, powered by Apache Hadoop, is a massively scalable and 100% open source platform for storing, processing and analyzing large volumes of data. It is designed to deal with data from many sources and formats in a very quick, easy and cost-effective manner. The Hortonworks Data Platform consists of the essential set of Apache Hadoop projects including MapReduce, Hadoop Distributed File System (HDFS), HCatalog, Pig, Hive, HBase, ZooKeeper and Ambari. Hortonworks is the major contributor of code and patches to many of these projects. These projects have been integrated and tested as part of the Hortonworks Data Platform release process and installation and configuration tools have also been included.

Unlike other providers of platforms built using Apache Hadoop, Hortonworks contributes 100% of our code back to the Apache Software Foundation. The Hortonworks Data Platform is Apache-licensed and completely open source. We sell only expert technical support, [training](#) and partner-enablement services. **All of our technology is, and will remain, free and open source.**

For more information on Hortonworks technology, visit the [Hortonworks Data Platform](#) page. For more information on Hortonworks services, visit either the [Support](#) or [Training](#) page. Feel free to [contact us](#) directly to discuss your specific needs.



Except where otherwise noted, this document is licensed under  
**Creative Commons Attribution ShareAlike 4.0 License.**  
<http://creativecommons.org/licenses/by-sa/4.0/legalcode>

# Table of Contents

1. Capacity Scheduler .....	1
1.1. Enabling Capacity Scheduler .....	1
1.2. Setting up Queues .....	1
1.2.1. Hierarchical Queue Characteristics .....	3
1.2.2. Scheduling Among Queues .....	3
1.3. Controlling Access to Queues with ACLs .....	4
1.4. Default Queue Mapping based on User or Group .....	5
1.4.1. Configuring Queue Mapping for Users and Groups to Specific Queues .....	5
1.4.2. Configuring Queue Mapping for Users and Groups to Queues with the Same Name .....	6
1.4.3. Enable Override of Default Queue Mappings .....	6
1.5. Managing Cluster Capacity with Queues .....	7
1.6. Resource Distribution Workflow .....	8
1.7. Resource Distribution Workflow Example .....	8
1.8. Setting User Limits .....	10
1.9. Application Reservations .....	11
1.10. Using Flexible Scheduling Policies .....	12
1.10.1. FIFO vs. Fair Sharing .....	12
1.10.2. Configuring Queue Ordering Policies .....	12
1.10.3. Best Practices for Ordering Policies .....	13
1.11. Starting and Stopping Queues .....	13
1.12. Setting Application Limits .....	14
1.13. Preemption .....	15
1.13.1. Preemption Workflow .....	15
1.13.2. Preemption Configuration .....	15
1.14. Scheduler User Interface .....	17
2. CGroups .....	18
2.1. Enabling CGroups .....	18
2.2. Using CGroups .....	21
3. Using CPU Scheduling to Allocate Resources .....	22
3.1. About YARN Resource Allocation .....	22
3.2. Configuring CPU Scheduling .....	23
3.3. Using CPU Scheduling .....	24
4. Log Aggregation for Long-running Applications .....	25
4.1. Enable Log Aggregation .....	25
4.2. Including and Excluding Log Files in YARN Applications Running on Slider .....	26
5. Node Labels .....	27
5.1. Configuring Node Labels .....	29
5.2. Using Node Labels .....	37
6. Running Applications on YARN Using Slider .....	42
6.1. System Requirements .....	42
6.2. Operating System Requirements .....	42
6.3. Installing Apache Slider .....	43
6.4. Additional Configuration Steps for Secure Clusters .....	43
6.5. Running Applications on Slider .....	43
6.5.1. The Slider Application Package .....	44
6.5.2. Install the Application Package .....	45

6.5.3. Start the Application .....	45
6.5.4. Verify the Application .....	46
6.5.5. Manage the Application Lifecycle .....	47
6.5.6. The Application Registry .....	48
6.6. Running HBase on YARN via Slider .....	49
6.6.1. Downloading and Installing the HBase Application Package .....	49
6.6.2. Configuring HBase on YARN via Slider .....	50
6.6.3. Configuring HBase on YARN on Secure Clusters .....	51
6.6.4. Components in HBase on YARN .....	51
6.6.5. Launching an HBase Application Instance .....	52
6.6.6. Deployment Considerations .....	54
6.7. Running Accumulo on YARN via Slider .....	57
6.7.1. Downloading and Installing the Accumulo Application Package .....	57
6.7.2. Configuring Accumulo on YARN .....	58
6.7.3. Configuring Accumulo on YARN on Secure Clusters .....	61
6.7.4. Launching an Accumulo Application Instance .....	62
6.7.5. Client Connections to Accumulo and Retrieving Effective accumulo- site.xml .....	65
6.7.6. Deployment Considerations .....	65
7. Running Multiple MapReduce Versions Using the YARN Distributed Cache .....	70
8. Timeline Server .....	74
8.1. Timeline Server 1.5 Overview .....	74
8.2. Upgrading Timeline Server 1.0 to 1.5 .....	75
8.3. Configuring the Timeline Server .....	77
8.4. Enabling Generic Data Collection .....	78
8.5. Configuring Per-Framework Data Collection .....	79
8.6. Configuring the Timeline Server Store .....	79
8.7. Configuring Timeline Server Security .....	80
8.8. Running the Timeline Server .....	81
8.9. Accessing Generic Data from the Command- Line .....	81
8.10. Publishing Per-Framework Data in Applications .....	82
9. Using the YARN REST APIs to Manage Applications .....	83
10. Work-Preserving Restart .....	86
10.1. Configuring the ResourceManager for Work-Preserving Restart .....	86
10.2. Configuring NodeManagers for Work-Preserving Restart .....	90
11. Using the YARN CLI to View Logs for Running Applications .....	92
11.1. View all Log Files for a Running Application .....	92
11.2. View a Specific Log Type for a Running Application .....	92
11.3. View ApplicationMaster Log Files .....	92
11.4. List Container IDs .....	92
11.5. View Log Files for One Container .....	93
11.6. Show Container Log File Information .....	93
11.7. View a Portion of the Log Files for One Container .....	93
11.8. Download Logs for a Running Application .....	93
11.9. Display Help for YARN Logs .....	93

# 1. Capacity Scheduler

This chapter describes how to use the Capacity Scheduler to allocate shared cluster resources among users and groups.

The fundamental unit of scheduling in YARN is the *queue*. Each queue in the Capacity Scheduler has the following properties:

- A short queue name.
- A full queue path name.
- A list of associated child-queues and applications.
- The guaranteed capacity of the queue.
- The maximum capacity of the queue.
- A list of active users and their corresponding resource allocation limits.
- The state of the queue.
- Access control lists (ACLs) governing access to the queue. The following sections will describe how to configure these properties, and how Capacity Scheduler uses these properties to make various scheduling decisions.

## 1.1. Enabling Capacity Scheduler

To enable the Capacity Scheduler, set the following property in the `/etc/hadoop/conf/yarn-site.xml` file on the ResourceManager host:

```
<property>
  <name>yarn.resourcemanager.scheduler.class</name>
  <value>org.apache.hadoop.yarn.server.resourcemanager.scheduler.capacity.
CapacityScheduler</value>
</property>
```

The settings for the Capacity Scheduler are contained in the `/etc/hadoop/conf/capacity-scheduler.xml` file on the ResourceManager host. The Capacity Scheduler reads this file when starting, and also when an administrator modifies the `capacity-scheduler.xml` file and then reloads the settings by running the following command:

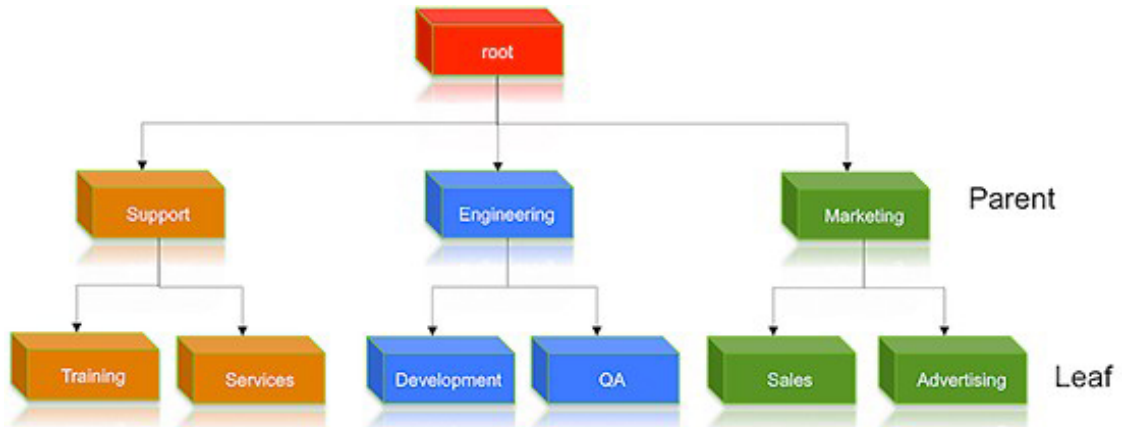
```
yarn radmin -refreshQueues
```

This command can only be run by cluster administrators. Administrator privileges are configured with the `yarn.admin.acl` property on the ResourceManager.

## 1.2. Setting up Queues

The fundamental unit of scheduling in YARN is a *queue*. The *capacity* of each queue specifies the percentage of cluster resources that are available for applications submitted to the queue. Queues can be set up in a hierarchy that reflects the database structure, resource requirements, and access restrictions required by the various organizations, groups, and users that utilize cluster resources.

For example, suppose that a company has three organizations: Engineering, Support, and Marketing. The Engineering organization has two sub-teams: Development and QA. The Support organization has two sub-teams: Training and Services. And finally, the Marketing organization is divided into Sales and Advertising. The following image shows the queue hierarchy for this example:



Each child queue is tied to its parent queue with the `yarn.scheduler.capacity.<queue-path>.queues` configuration property in the `capacity-scheduler.xml` file. The top-level "support", "engineering", and "marketing" queues would be tied to the "root" queue as follows:

**Property:** `yarn.scheduler.capacity.root.queues`

**Value:** `support,engineering,marketing`

**Example:**

```

<property>
  <name>yarn.scheduler.capacity.root.queues</name>
  <value>support,engineering,marketing</value>
  <description>The top-level queues below root.</description>
</property>

```

Similarly, the children of the "support" queue would be defined as follows:

**Property:** `yarn.scheduler.capacity.support.queues`

**Value:** `training,services`

**Example:**

```

<property>
  <name>yarn.scheduler.capacity.support.queues</name>
  <value>training,services</value>
  <description>child queues under support</description>
</property>

```

The children of the "engineering" queue would be defined as follows:

**Property:** `yarn.scheduler.capacity.engineering.queues`

**Value:** `development,qa`

Example:

```
<property>
  <name>yarn.scheduler.capacity.engineering.queues</name>
  <value>development,qa</value>
  <description>child queues under engineering</description>
</property>
```

And the children of the "marketing" queue would be defined as follows:

**Property:** yarn.scheduler.capacity.marketing.queues

**Value:** sales,advertising

Example:

```
<property>
  <name>yarn.scheduler.capacity.marketing.queues</name>
  <value>sales,advertising</value>
  <description>child queues under marketing</description>
</property>
```

## 1.2.1. Hierarchical Queue Characteristics

- There are two types of queues: *parent* queues and *leaf* queues.
- Parent queues enable the management of resources across organizations and sub-organizations. They can contain more parent queues or leaf queues. They do not themselves accept any application submissions directly.
- Leaf queues are the queues that live under a parent queue and accept applications. Leaf queues do not have any child queues, and therefore do not have any configuration property that ends with ".queues".
- There is a top-level parent *root* queue that does not belong to any organization, but instead represents the cluster itself.
- Using parent and leaf queues, administrators can specify capacity allocations for various organizations and sub-organizations.

## 1.2.2. Scheduling Among Queues

Hierarchical queues ensure that guaranteed resources are first shared among the sub-queues of an organization before any remaining free resources are shared with queues belonging to other organizations. This enables each organization to have control over the utilization of its guaranteed resources.

- At each level in the hierarchy, every parent queue keeps the list of its child queues in a sorted manner based on demand. The sorting of the queues is determined by the currently used fraction of each queue's capacity (or the full-path queue names if the reserved capacity of any two queues is equal).
- The root queue understands how the cluster capacity needs to be distributed among the first level of parent queues and invokes scheduling on each of its child queues.
- Every parent queue applies its capacity constraints to all of its child queues.

- Leaf queues hold the list of active applications (potentially from multiple users) and schedules resources in a FIFO (first-in, first-out) manner, while at the same time adhering to capacity limits specified for individual users.

## 1.3. Controlling Access to Queues with ACLs

Access-control lists (ACLs) can be used to restrict user and administrator access to queues. Application submission can really only happen at the leaf queue level, but an ACL restriction set on a parent queue will be applied to all of its descendant queues.



### Note

To enable ACLs, you must set the value of the `yarn.acl.enable` property in `yarn-site.xml` to `true`. The default value of this property is `false`.

In the Capacity Scheduler, ACLs are configured by granting queue access to a list of users and groups with the `acl_submit_applications` property. The format of the list is "user1,user2 group1,group2" – a comma-separated list of users, followed by a space, followed by a comma-separated list of groups.

The value of `acl_submit_applications` can also be set to "\*" (asterisk) to allow access to all users and groups, or can be set to " " (space character) to block access to all users and groups.

As mentioned previously, ACL settings on a parent queue are applied to all of its descendant queues. Therefore, if the parent queue uses the "\*" (asterisk) value (or is not specified) to allow access to all users and groups, its child queues cannot restrict access. Similarly, before you can restrict access to a child queue, you must first set the parent queue to " " (space character) to block access to all users and groups.

For example, the following properties would set the root `acl_submit_applications` value to " " (space character) to block access to all users and groups, and also restrict access to its child "support" queue to the users "sherlock" and "pacioli" and the members of the "cfo-group" group:

```
<property>
  <name>yarn.scheduler.capacity.root.acl_submit_applications</name>
  <value> </value>
</property>

<property>
  <name>yarn.scheduler.capacity.root.support.acl_submit_applications</name>
  <value>sherlock,pacioli cfo-group</value>
</property>
```

A separate ACL can be used to control the administration of queues at various levels. Queue administrators can submit applications to the queue, kill applications in the queue, and obtain information about any application in the queue (whereas normal users are restricted from viewing all of the details of other users' applications).

Administrator ACLs are configured with the `acl_administer_queue` property. ACLs for this property are inherited from the parent queue if not specified. For example, the following properties would set the root `acl_administer_queue` value to " " (space character) to block access to all users and groups, and also grant administrator access to



its child "support" queue to the users "sherlock" and "pacioli" and the members of the "cfo-group" group:

```
<property>
  <name>yarn.scheduler.capacity.root.acl_administer_queue</name>
  <value> </value>
</property>

<property>
  <name>yarn.scheduler.capacity.root.support.acl_administer_queue</name>
  <value>sherlock,pacioli cfo-group</value>
</property>
```

## 1.4. Default Queue Mapping based on User or Group

Administrators can define a default mapping policy to specify that applications submitted by users are automatically submitted to queues. With a default mapping policy, users are not required to specify the queue name when submitting their applications. The default mapping policy can be configured to be overridden if the queue name is specified for the submitted application.

Queue mapping is defined using a comma-separated list of mapping assignments. The order of the mapping assignments list is important – in cases where multiple mapping assignments are used, the Capacity Scheduler processes the mapping assignments in left-to-right order to determine which mapping assignment to use first.

The Queue mapping assignment is defined using the `yarn.scheduler.capacity.queue-mappings` property in the `capacity-scheduler.xml` file. Queue mapping assignments can be defined for a user (using "u") or for a group of users (using "g"). Each mapping assignment type is described in the following sections.

### 1.4.1. Configuring Queue Mapping for Users and Groups to Specific Queues

To specify that all applications submitted by a specific user are submitted to a specific queue, use the following mapping assignment:

```
u:user1:queueA
```

This defines a mapping assignment for applications submitted by the "user1" user to be submitted to queue "queueA" by default.

To specify that all applications submitted by a specific group of users are submitted to a specific queue, use the following mapping assignment:

```
g:group1:queueB
```

This defines a mapping assignment for applications submitted by any user in the group "group1" to be submitted to queue "queueB" by default.

The Queue Mapping definition can consist of multiple assignments, in order of priority.

Consider the following example:

```
<property>
  <name>yarn.scheduler.capacity.queue-mappings</name>
  <value>u:maria:engineering,g:webadmins:weblog</value>
</property>
```

In this example there are two queue mapping assignments. The `u:maria:engineering` mapping will be respected first, which means all applications submitted by the user "maria" will be submitted to the "engineering" queue. The `g:webadmins:weblog` mapping will be processed after the first mapping – thus, even if user "maria" belongs to the "webadmins" group, applications submitted by "maria" will still be submitted to the "engineering" queue.

## 1.4.2. Configuring Queue Mapping for Users and Groups to Queues with the Same Name

To specify that all applications are submitted to the queue with the same name as a group, use this mapping assignment:

```
u:%user:%primary_group
```

Consider the following example configuration. On this cluster, there are two groups: "marketing" and "engineering". Each group has the following users:

In "marketing", there are 3 users: "angela", "rahul", and "dmitry".

In "engineering", there are 2 users: "maria" and "greg".

```
<property>
  <name>yarn.scheduler.capacity.queue-mappings</name>
  <value>u:%user:%primary_group</value>
</property>
```

With this queue mapping, any application submitted by members of the "marketing" group – "angela", "rahul", or "dmitry" – will be submitted to the "marketing" queue. Any application submitted by members of the "engineering" group – "maria" or "greg" – will be submitted to the "engineering" queue.

To specify that all applications are submitted to the queue with the same name as a user, use this mapping assignment:

```
u:%user:%user
```

This requires that queues are set up with the same name as the users. With this queue mapping, applications submitted by user "greg" will be submitted to the queue "greg".

## 1.4.3. Enable Override of Default Queue Mappings

If configured, users can override default queue mappings and submit applications that are specified for queues other than those defined in the default queue mappings. This override capability is disabled by default.

To enable queue mapping override, set the following property to `true` in the `capacity-scheduler.xml` file.

```
<property>
  <name>yarn.scheduler.capacity.queue-mappings-override.enable</name>
  <value>true</value>
</property>
```

Consider the following example in the case where queue mapping override has been enabled:

```
<property>
  <name>yarn.scheduler.capacity.queue-mappings</name>
  <value>u:maria:engineering,g:webadmins:weblog</value>
</property>
```

If user "maria" explicitly submits an application to the "marketing" queue, the default queue assignment of "engineering" will be overridden, and the application will be submitted to the "marketing" queue.

## 1.5. Managing Cluster Capacity with Queues

The Capacity Scheduler is designed to allow organizations to share compute clusters using the very familiar notion of FIFO (first-in, first-out) queues. YARN does not assign entire nodes to queues. Queues own a fraction of the capacity of the cluster, and this specified queue capacity can be fulfilled from any number of nodes in a dynamic fashion.

Scheduling is the process of matching resource requirements – of multiple applications from various users, and submitted to different queues at multiple levels in the queue hierarchy – with the free capacity available on the nodes in the cluster. Because total cluster capacity can vary, capacity configuration values are expressed as percents.

The `capacity` property can be used by administrators to allocate a percentage of cluster capacity to a queue. The following properties would divide the cluster resources between the Engineering, Support, and Marketing organizations in a 6:1:3 ratio (60%, 10%, and 30%).

**Property:** `yarn.scheduler.capacity.root.engineering.capacity`

**Value:** 60

**Property:** `yarn.scheduler.capacity.root.support.capacity`

**Value:** 10

**Property:** `yarn.scheduler.capacity.root.marketing.capacity`

**Value:** 30

Now suppose that the Engineering group decides to split its capacity between the Development and QA sub-teams in a 1:4 ratio. That would be implemented by setting the following properties:

**Property:** `yarn.scheduler.capacity.root.engineering.development.capacity`

**Value:** 20

**Property:** `yarn.scheduler.capacity.root.engineering.qa.capacity`

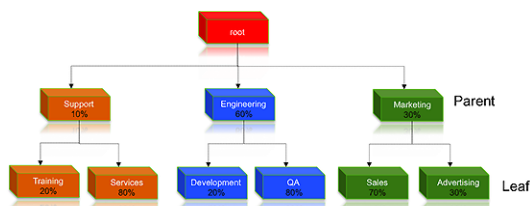
**Value:** 80



## Note

The sum of capacities at any level in the hierarchy must equal 100%. Also, the capacity of an individual queue at any level in the hierarchy must be 1% or more (you cannot set a capacity to a value of 0).

The following image illustrates this cluster capacity configuration:



## 1.6. Resource Distribution Workflow

During scheduling, queues at any level in the hierarchy are sorted in the order of their current used capacity, and available resources are distributed among them starting with queues that are currently the most under-served. With respect to capacities alone, the resource scheduling has the following workflow:

- The more under-served a queue is, the higher the priority it receives during resource allocation. The most under-served queue is the queue with the least ratio of used capacity as compared to the total cluster capacity.
- The used capacity of any parent queue is defined as the aggregate sum of used capacity of all of its descendant queues, recursively.
- The used capacity of a leaf queue is the amount of resources used by the allocated Containers of all of the applications running in that queue.
- Once it is decided to give a parent queue the currently available free resources, further scheduling is done recursively to determine which child queue gets to use the resources – based on the previously described concept of used capacities.
- Further scheduling happens inside each leaf queue to allocate resources to applications in a FIFO order.
  - This is also dependent on locality, user level limits, and application limits.
  - Once an application within a leaf queue is chosen, scheduling also happens within the application. Applications may have different priorities of resource requests.
- To ensure elasticity, capacity that is configured but not utilized by any queue due to lack of demand is automatically assigned to the queues that are in need of resources.

## 1.7. Resource Distribution Workflow Example

Suppose our cluster has 100 nodes, each with 10 GB of memory allocated for YARN Containers, for a total cluster capacity of 1000 GB (1 TB). According to the previously described configuration, the Engineering organization is assigned 60% of the cluster

capacity, i.e., an absolute capacity of 600 GB. Similarly, the Support organization is assigned 100 GB, and the Marketing organization gets 300 GB.

Under the Engineering organization, capacity is distributed between the Development team and the QA team in a 1:4 ratio. So Development gets 120 GB, and 480 GB is assigned to QA.

Now consider the following timeline of events:

- Initially, the entire "engineering" queue is free with no applications running, while the "support" and "marketing" queues are utilizing their full capacities.
- Users Sid and Hitesh first submit applications to the "development" leaf queue. Their applications are elastic and can run with either all of the resources available in the cluster, or with a subset of cluster resources (depending upon the state of the resource-usage).
  - Even though the "development" queue is allocated 120 GB, Sid and Hitesh are each allowed to occupy 120 GB, for a total of 240 GB.
  - This can happen despite the fact that the "development" queue is configured to be run with a capacity of 120 GB. Capacity Scheduler allows elastic sharing of cluster resources for better utilization of available cluster resources. Since there are no other users in the "engineering" queue, Sid and Hitesh are allowed to use the available free resources.
- Next, users Jian, Zhijie and Xuan submit more applications to the "development" leaf queue. Even though each is restricted to 120 GB, the overall used capacity in the queue becomes 600 GB – essentially taking over all of the resources allocated to the "qa" leaf queue.
- User Gupta now submits an application to the "qa" queue. With no free resources available in the cluster, his application must wait.
  - Given that the "development" queue is utilizing all of the available cluster resources, Gupta may or may not be able to immediately get back the guaranteed capacity of his "qa" queue – depending upon whether or not preemption is enabled.
- As the applications of Sid, Hitesh, Jian, Zhijie, and Xuan finish running and resources become available, the newly available Containers will be allocated to Gupta's application.

This will continue until the cluster stabilizes at the intended 1:4 resource usage ratio for the "development" and "qa" queues.

From this example, you can see that it is possible for abusive users to submit applications continuously, and thereby lock out other queues from resource allocation until Containers finish running or get preempted. To avoid this scenario, Capacity Scheduler supports limits on the elastic growth of any queue. For example, to restrict the "development" queue from monopolizing the "engineering" queue capacity, an administrator can set a the maximum-capacity property:

**Property:**

```
yarn.scheduler.capacity.root.engineering.development.maximum-capacity
```

**Value:** 40

Once this is set, users of the "development" queue can still go beyond their capacity of 120 GB, but they will not be allocated any more than 40% of the "engineering" parent queue's capacity (i.e., 40% of 600 GB = 240 GB).

The capacity and maximum-capacity properties can be used to control sharing and elasticity across the organizations and sub-organizations utilizing a YARN cluster. Administrators should balance these properties to avoid strict limits that result in a loss of utilization, and to avoid excessive cross-organization sharing.

Capacity and maximum capacity settings can be dynamically changed at run-time using `yarn radmin -refreshQueues`.

## 1.8. Setting User Limits

The `minimum-user-limit-percent` property can be used to set the minimum percentage of resources allocated to each leaf queue user. For example, to enable equal sharing of the "services" leaf queue capacity among five users, you would set the `minimum-user-limit` property to 20%:

**Property:** `yarn.scheduler.capacity.root.support.services.minimum-user-limit-percent`

**Value:** 20

This setting determines the minimum limit that any user's share of the queue capacity can shrink to. Irrespective of this limit, any user can come into the queue and take more than his or her allocated share if there are idle resources available.

The following table shows how the queue resources are adjusted as users submit jobs to a queue with a `minimum-user-limit-percent` value of 20%:

<code>yarn.scheduler.capacity.root.marketing.minimum-user-limit-percent = 20</code>	
1 user submits jobs	Sole user gets 100% of queue capacity.
2 users submit jobs	Each user equally shares 50% of queue capacity.
3 users submit jobs	Each user equally shares 33.33% of queue capacity.
4 users submit jobs	Each user equally shares 25% of queue capacity.
5 users submit jobs	Each user equally shares 20% of queue capacity.
6 <sup>th</sup> user submits job	6 <sup>th</sup> user must wait for queue capacity to free up.

- Queue resources are adjusted in the same manner for a single user submitting multiple jobs in succession. If no other users are requesting queue resources, the first job would receive 100% of the queue capacity. When the user submits a second job, each job receives 50% of queue capacity. When the user submits a third job, each job receives 33% of queue capacity. If a second user then submits a job, each job would receive 25% of queue capacity. When the number of jobs submitted by all users reaches a total of five, each job will receive 20% of queue capacity, and subsequent users must wait for queue capacity to free up (assuming preemption is not enabled).
- The Capacity Scheduler also manages resources for decreasing numbers of users. As users' applications finish running, other existing users with outstanding requirements begin to reclaim that share.

- Note that despite this sharing among users, the FIFO application scheduling order of Capacity Scheduler does not change. This guarantees that users cannot monopolize queues by submitting new applications continuously. Applications (and thus the corresponding users) that are submitted first always get a higher priority than applications that are submitted later.

Capacity Scheduler's leaf queues can also use the `user-limit-factor` property to control user resource allocations. This property denotes the fraction of queue capacity that any single user can consume up to a maximum value, regardless of whether or not there are idle resources in the cluster.

**Property:** `yarn.scheduler.capacity.root.support.user-limit-factor`

**Value:** 1

The default value of "1" means that any single user in the queue can at maximum only occupy the queue's configured capacity. This prevents users in a single queue from monopolizing resources across all queues in a cluster. Setting the value to "2" would restrict the queue's users to twice the queue's configured capacity. Setting it to a value of 0.5 would restrict any user from using resources beyond half of the queue capacity.

These settings can also be dynamically changed at run-time using `yarn radmin -refreshQueues`.

## 1.9. Application Reservations

The Capacity Scheduler is responsible for matching free resources in the cluster with the resource requirements of an application. Many times, a scheduling cycle occurs such that even though there are free resources on a node, they are not sized large enough to satisfy the application waiting for a resource at the head of the queue. This typically happens with high-memory applications whose resource demand for Containers is much larger than the typical application running in the cluster. This mismatch can lead to starving these resource-intensive applications.

The Capacity Scheduler *reservations* feature addresses this issue as follows:

- When a node reports in with a finished Container, the Capacity Scheduler selects an appropriate queue to utilize the newly available resources based on capacity and maximum capacity settings.
- Within that selected queue, the Capacity Scheduler looks at the applications in a FIFO order along with the user limits. Once a needy application is found, the Capacity Scheduler tries to see if the requirements of that application can be met by the node's free capacity.
- If there is a size mismatch, the Capacity Scheduler immediately creates a reservation on the node for the application's required Container.
- Once a reservation is made for an application on a node, those resources are not used by the Capacity Scheduler for any other queue, application, or Container until the application reservation is fulfilled.
- The node on which a reservation is made reports back when enough Containers finish running such that the total free capacity on the node now matches the reservation size.

When that happens, the Capacity Scheduler marks the reservation as fulfilled, removes it, and allocates a Container on the node.

- In some cases another node fulfills the resources required by the application, so the application no longer needs the reserved capacity on the first node. In this situation, the reservation is simply cancelled.

To prevent the number of reservations from growing in an unbounded manner, and to avoid any potential scheduling deadlocks, the Capacity Scheduler maintains only one active reservation at a time on each node.

## 1.10. Using Flexible Scheduling Policies

The default ordering policy in Capacity Scheduler is FIFO (First-In, First-Out). FIFO generally works well for predictable, recurring batch jobs, but sometimes not as well for on-demand or exploratory workloads. For these types of jobs, Fair Sharing is often a better choice. Flexible scheduling policies enable you to assign FIFO or Fair ordering policies for different types of workloads on a per-queue basis.

### 1.10.1. FIFO vs. Fair Sharing

#### Batch Example

In this example, two queues have the same resources available. One uses the FIFO ordering policy, and the other uses the Fair Sharing policy. A user submits three jobs to each queue one right after another, waiting just long enough for each job to start. The first job uses 6x the resource limit in the queue, the second 4x, and last 2x.

- In the FIFO queue, the 6x job would start and run to completion, then the 4x job would start and run to completion, and then the 2x job. They would start and finish in the order 6x, 4x, 2x.
- In the Fair queue, the 6x job would start, then the 4x job, and then the 2x job. All three would run concurrently, with each using 1/3 of the available application resources. They would typically finish in the following order: 2x, 4x, 6x.

#### Ad Hoc Plus Batch Example

In this example, a job using 10x the queue resources is running. After the job is halfway complete, the same user starts a second job needing 1x the queue resources.

- In the FIFO queue, the 10x job will run until it no longer uses all queue resources (map phase complete, for example), and then the 1x job will start.
- In the Fair queue, the 1x job will start, run, and complete as soon as possible – picking up resources from the 10x job by attrition.

### 1.10.2. Configuring Queue Ordering Policies

Ordering policies are configured in `capacity-scheduler.xml`.

To specify ordering policies on a per-queue basis, set the following property to `fifo` or `fair`. The default setting is `fifo`.



```
<property>
  <name>yarn.scheduler.capacity.<queue-path>.ordering-policy</name>
  <value>fair</value>
</property>
```

You can use the following property to enable size-based weighting of resource allocation. When this property is set to `true`, queue resources are assigned to individual applications based on their size, rather than providing an equal share of queue resources to all applications regardless of size. The default setting is `false`.

```
<property>
<name>yarn.scheduler.capacity.<queue-path>.ordering-policy.fair.enable-size-
based-weight</name>
<value>true</value>
</property>
```

### 1.10.3. Best Practices for Ordering Policies

- Ordering policies are configured on a per-queue basis, with the default ordering policy set to FIFO. Fairness is usually best for on-demand, interactive, or exploratory workloads, while FIFO can be more efficient for predictable, recurring batch processing. You should segregate these different types of workloads into queues configured with the appropriate ordering policy.
- In queues supporting both large and small applications, large applications can potentially "starve" (not receive sufficient resources). To avoid this scenario, use different queues for large and small jobs, or use size-based weighting to reduce the natural tendency of the ordering logic to favor smaller applications.
- Use the `yarn.scheduler.capacity.<queue-path>.maximum-am-resource-percent` property to restrict the number of concurrent applications running in the queue to avoid a scenario in which too many applications are running simultaneously. Limits on each queue are directly proportional to their queue capacities and user limits. This property is specified as a float, for example: `0.5 = 50%`. The default setting is `10%`. This property can be set for all queues using the `yarn.scheduler.capacity.maximum-am-resource-percent` property, and can also be overridden on a per-queue basis using the `yarn.scheduler.capacity.<queue-path>.maximum-am-resource-percent` property.

## 1.11. Starting and Stopping Queues

Queues in YARN can be in two states: `RUNNING` or `STOPPED`. A `RUNNING` state indicates that a queue can accept application submissions, and a `STOPPED` queue does not accept application submissions. The default state of any configured queue is `RUNNING`.

In Capacity Scheduler, parent queues, leaf queues, and the root queue can all be stopped. For an application to be accepted at any leaf queue, all the queues in the hierarchy all the way up to the root queue must be running. This means that if a parent queue is stopped, all of the descendant queues in that hierarchy are inactive, even if their own state is `RUNNING`.

The following example sets the value of the state property of the "support" queue to `RUNNING`:

**Property:** `yarn.scheduler.capacity.root.support.state`

**Value:** `RUNNING`

Administrators can use the ability to stop and drain applications in a queue for a number of reasons, such as when decommissioning a queue and migrating its users to other queues. Administrators can stop queues at run-time, so that while current applications run to completion, no new applications are admitted. Existing applications can continue until they finish running, and thus the queue can be drained gracefully without any end-user impact.

Administrators can also restart the stopped queues by modifying the state configuration property and then refreshing the queue using `yarn radmin -refreshQueues` as previously described.

## 1.12. Setting Application Limits

To avoid system-thrash due to an unmanageable load – caused either by malicious users, or by accident – the Capacity Scheduler enables you to place a static, configurable limit on the total number of concurrently active (both running and pending) applications at any one time. The `maximum-applications` configuration property is used to set this limit, with a default value of 10,000:

**Property:** `yarn.scheduler.capacity.maximum-applications`

**Value:** `10000`

The limit for running applications in any specific queue is a fraction of this total limit, proportional to its capacity. This is a hard limit, which means that once this limit is reached for a queue, any new applications to that queue will be rejected, and clients will have to wait and retry later. This limit can be explicitly overridden on a per-queue basis with the following configuration property:

**Property:** `yarn.scheduler.capacity.<queue-path>.maximum-applications`

**Value:** `absolute-capacity * yarn.scheduler.capacity.maximum-applications`

There is another resource limit that can be used to set a maximum percentage of cluster resources allocated specifically to ApplicationMasters. The `maximum-am-resource-percent` property has a default value of 10%, and exists to avoid cross-application deadlocks where significant resources in the cluster are occupied entirely by the Containers running ApplicationMasters. This property also indirectly controls the number of concurrent running applications in the cluster, with each queue limited to a number of running applications proportional to its capacity.

**Property:** `yarn.scheduler.capacity.maximum-am-resource-percent`

**Value:** `0.1`

As with `maximum-applications`, this limit can also be overridden on a per-queue basis:

**Property:** `yarn.scheduler.capacity.<queue-path>.maximum-am-resource-percent`

**Value:** 0.1

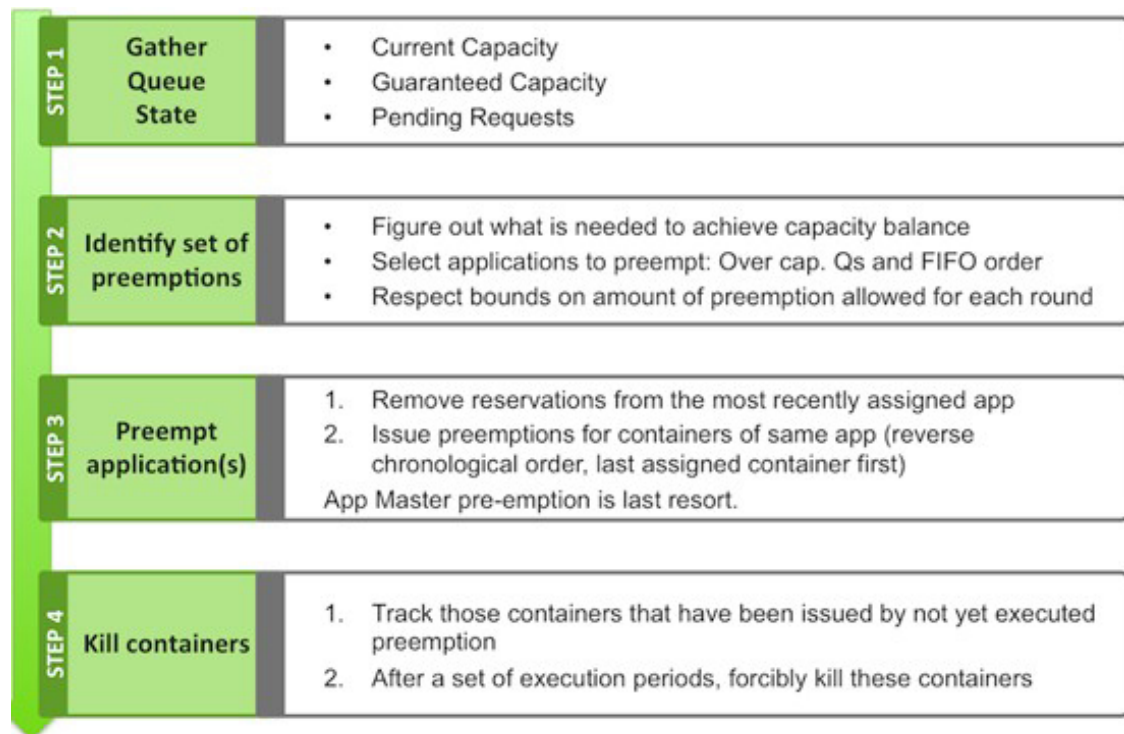
All of these limits ensure that no single application, user, or queue can cause catastrophic failure, or monopolize the cluster and cause excessive degradation of cluster performance.

## 1.13. Preemption

As mentioned previously, a scenario can occur in which a queue has a guaranteed level of cluster resources, but must wait to run applications because other queues are utilizing all of the available resources. If Preemption is enabled, higher-priority applications do not have to wait because lower priority applications have taken up the available capacity. With Preemption enabled, under-served queues can begin to claim their allocated cluster resources almost immediately, without having to wait for other queues' applications to finish running.

### 1.13.1. Preemption Workflow

Preemption is governed by a set of capacity monitor policies, which must be enabled by setting the `yarn.resourcemanager.scheduler.monitor.enable` property to "true". These capacity monitor policies apply Preemption in configurable intervals based on defined capacity allocations, and in as graceful a manner as possible. Containers are only killed as a last resort. The following image demonstrates the Preemption workflow:



### 1.13.2. Preemption Configuration

The following properties in the `/etc/hadoop/conf/yarn-site.xml` file on the ResourceManager host are used to enable and configure Preemption.

- **Property:** `yarn.resourcemanager.scheduler.monitor.enable`

**Value:** `true`

**Description:** Setting this property to "true" enables Preemption. It enables a set of periodic monitors that affect the Capacity Scheduler. This default value for this property is "false" (disabled).

- **Property:** `yarn.resourcemanager.scheduler.monitor.policies`

**Value:**

`org.apache.hadoop.yarn.server.resourcemanager.monitor.capacity.ProportionalCa`

**Description:** The list of SchedulingEditPolicy classes that interact with the scheduler. The only policy currently available for preemption is the "ProportionalCapacityPreemptionPolicy".

- **Property:**

`yarn.resourcemanager.monitor.capacity.preemption.monitoring_interval`

**Value:** `3000`

**Description:** The time in milliseconds between invocations of this policy. Setting this value to a longer time interval will cause the Capacity Monitor to run less frequently.

- **Property:**

`yarn.resourcemanager.monitor.capacity.preemption.max_wait_before_kill`

**Value:** `15000`

**Description:** The time in milliseconds between requesting a preemption from an application and killing the container. Setting this to a higher value will give applications more time to respond to preemption requests and gracefully release Containers.

- **Property:**

`yarn.resourcemanager.monitor.capacity.preemption.total_preemption_per_round`

**Value:** `0.1`

**Description:** The maximum percentage of resources preempted in a single round. You can use this value to restrict the pace at which Containers are reclaimed from the cluster. After computing the total desired preemption, the policy scales it back to this limit. This should be set to  $(\text{memory-of-one-NodeManager})/(\text{total-cluster-memory})$ . For example, if one NodeManager has 32 GB, and the total cluster resource is 100 GB, the `total_preemption_per_round` should be set to  $32/100 = 0.32$ . The default value is 0.1 (10%).

- **Property:**

`yarn.resourcemanager.monitor.capacity.preemption.natural_termination_factor`

**Value:** `0.2`

**Description:** Similar to `total_preemption_per_round`, you can apply this factor to slow down resource preemption after the preemption target is computed for each queue (for example, "give me 5 GB back from queue-A"). For example, if 5 GB is needed back, in the

first cycle preemption takes back 1 GB (20% of 5GB), 0.8 GB (20% of the remaining 4 GB) in the next, 0.64 GB (20% of the remaining 3.2 GB) next, and so on. You can increase this value to speed up resource reclamation. The default value is 0.2, meaning that at most 20% of the target capacity is preempted in a cycle.



## Note

For more information about Preemption, see [Better SLAS Via Resource Preemption in the YARN Capacity Scheduler](#).

## 1.14. Scheduler User Interface

You can use the Scheduler page in the Hadoop User Interface (UI) page to view the status and settings of Capacity Scheduler queues. The following image shows the Hadoop UI Scheduler page (<http://<hostname>:8088/cluster/scheduler>) with the "support" queue selected:

The screenshot shows the Hadoop UI Scheduler page. At the top, the Hadoop logo is on the left, and the text "NEW,NEW\_SAVING,SUBMITTED,ACCEPTED,RUNNING Applications" is in the center. The top right corner indicates "Logged in as: drwho".

On the left side, there is a navigation menu with the following items: Cluster, About, Nodes, Applications, NEW, NEW\_SAVING, SUBMITTED, ACCEPTED, RUNNING, FINISHED, FAILED, SUCCEEDED, Scheduler, and Tools. The "Scheduler" item is selected.

The main content area is titled "Cluster Metrics" and contains a table with the following columns: Apps Submitted, Apps Pending, Apps Running, Apps Completed, Containers Running, Memory Used, Memory Total, Memory Reserved, Active Nodes, Decommissioned Nodes, Lost Nodes, Unhealthy Nodes, and Rebooted Nodes. The values for all these metrics are 0.

Below the table is the "Application Queues" section. It has a legend with three items: Capacity (green), Used (orange), and Max Capacity (grey). Below the legend is a tree view of queues: /- root (0.0% used), /+ default (0.0% used), /+ engineering (0.0% used), /+ marketing (0.0% used), and /- support (0.0% used). The "support" queue is selected.

The "support" queue details are shown in a box titled "'support' Queue Status". The details are as follows:

- Queue State: RUNNING
- Used Capacity: 0.0%
- Absolute Used Capacity: 0.0%
- Absolute Capacity: 10.0%
- Absolute Max Capacity: 100.0%
- Used Resources: <memory:0, vCores:0>
- Num Schedulable Applications: 0
- Num Non-Schedulable Applications: 0
- Num Containers: 0
- Max Applications: 1000
- Max Applications Per User: 1000
- Max Schedulable Applications: 5
- Max Schedulable Applications Per User: 1
- Configured Capacity: 10.0%
- Configured Max Capacity: 100.0%
- Configured Minimum User Limit Percent: 100%
- Configured User Limit Factor: 1.0
- Active users:

## 2. CGroups

You can use CGroups to isolate CPU-heavy processes in a Hadoop cluster. If you are using CPU scheduling, you should also use CGroups to constrain and manage CPU processes. If you are not using CPU scheduling, do not enable CGroups.

When you enable CPU scheduling, queues are still used to allocate cluster resources, but both CPU and memory are taken into consideration using a scheduler that utilizes Dominant Resource Fairness (DRF). In the DRF model, resource allocation takes into account the dominant resource required by a process. CPU-heavy processes (such as Storm-on-YARN) receive more CPU and less memory. Memory-heavy processes (such as MapReduce) receive more memory and less CPU. The DRF scheduler is designed to fairly distribute memory and CPU resources among different types of processes in a mixed-workload cluster.

CGroups compliments CPU scheduling by providing CPU resource isolation. It enables you to set limits on the amount of CPU resources granted to individual YARN containers, and also lets you set a limit on the total amount of CPU resources used by YARN processes.

CGroups represents one aspect of YARN resource management capabilities that includes CPU scheduling, node labels, archival storage, and memory as storage. If CPU scheduling is used, CGroups should be used along with it to constrain and manage CPU processes.

### 2.1. Enabling CGroups

CGroups is a Linux kernel feature. Currently HDP supports CGroups on RHEL6 and Centos6. HDP does not support the default CGroups on Centos7 or RHEL7. However, Centos7 and RHEL7 are supported if you set up your own CGroups. At this time there is no CGroups equivalent for Windows. CGroups are not enabled by default on HDP. CGroups require that the HDP cluster be Kerberos enabled.



#### Note

On RHEL7, the `cpu` and `cpuacct` controllers are managed together by default. The default directory is `/sys/fs/cgroup/cpu,cpuacct`. Due to the parsing logic of the container-executor, the presence of the comma in this path may lead to failures when initializing the NodeManager (when using the `LinuxContainerExecutor`).

To avoid this issue, create your own directory (such as `/sys/fs/cgroup/hadoop/cpu`) and set the `yarn.nodemanager.linux-container-executor.cgroups.mount` property to `true`. This will allow the NodeManager to mount the `cpu` controller, and YARN will be able to enforce CPU limits.

If you would like to mount CGroups yourself, you should set the `yarn.nodemanager.linux-container-executor.cgroups.mount` property to `false` and ensure that the hierarchy specified in the `yarn.nodemanager.linux-container-executor.cgroups.hierarchy` property exists in the mount location. You must also ensure that there are no commas anywhere in the path names.

## Enable CGroups

On Centos 6, CGroups are not set up by default. Run the following commands to set up CGroups:

```
yum install libcgroup
sudo mkdir /cgroup
mount -t cgroup -o cpu cpu /cgroup
```

Set the following properties in the `/etc/hadoop/conf/yarn-site.xml` file on the ResourceManager and NodeManager hosts:

**Property:** `yarn.nodemanager.container-executor.class`

**Value:**

`org.apache.hadoop.yarn.server.nodemanager.LinuxContainerExecutor`

**Example:**

```
<property>
  <name>yarn.nodemanager.container-executor.class</name>
  <value>org.apache.hadoop.yarn.server.nodemanager.LinuxContainerExecutor</value>
</property>
```

**Property:** `yarn.nodemanager.linux-container-executor.group`

**Value:** `hadoop`

**Example:**

```
<property>
  <name>yarn.nodemanager.linux-container-executor.group</name>
  <value>hadoop</value>
</property>
```

**Property:** `yarn.nodemanager.linux-container-executor.resources-handler.class`

**Value:**

`org.apache.hadoop.yarn.server.nodemanager.util.CgroupsLCEResourcesHandler`

**Example:**

```
<property>
  <name>yarn.nodemanager.linux-container-executor.resources-handler.class</name>
  <value>org.apache.hadoop.yarn.server.nodemanager.util.CgroupsLCEResourcesHandler</value>
</property>
```

**Property:** `yarn.nodemanager.linux-container-executor.cgroups.hierarchy`

**Value:** `/yarn`

**Example:**

```
<property>
```

```
<name>yarn.nodemanager.linux-container-executor.cgroups.hierarchy</name>
<value>/yarn</value>
</property>
```

**Property:** yarn.nodemanager.linux-container-executor.cgroups.mount

**Value:** true

**Example:**

```
<property>
  <name>yarn.nodemanager.linux-container-executor.cgroups.mount</name>
  <value>>true</value>
</property>
```

**Property:** yarn.nodemanager.linux-container-executor.cgroups.mount-path

**Value:** /cgroup

**Example:**

```
<property>
  <name>yarn.nodemanager.linux-container-executor.cgroups.mount-path</name>
  <value>/cgroup</value>
</property>
```

### Set the Percentage of CPU used by YARN

Set the percentage of CPU that can be allocated for YARN containers. In most cases, the default value of 100% should be used. If you have another process that needs to run on a node that also requires CPU resources, you can lower the percentage of CPU allocated to YARN to free up resources for the other process.

**Property:** yarn.nodemanager.resource.percentage-physical-cpu-limit

**Value:** 100

**Example:**

```
<property>
  <name>yarn.nodemanager.resource.percentage-physical-cpu-limit</name>
  <value>100</value>
</property>
```

### Set Flexible or Strict CPU limits

CPU jobs are constrained with CPU scheduling and CGroups enabled, but by default these are flexible limits. If spare CPU cycles are available, containers are allowed to exceed the CPU limits set for them. With flexible limits, the amount of CPU resources available for containers to use can vary based on cluster usage – the amount of CPU available in the cluster at any given time.

You can use CGroups to set strict limits on CPU usage. When strict limits are enabled, each process receives only the amount of CPU resources it requests. With strict limits, a CPU process will receive the same amount of cluster resources every time it runs.



Strict limits are not enabled (set to `false`) by default. To enable strict CPU limits, set the following property to `true`.

**Property:** `yarn.nodemanager.linux-container-executor.cgroups.strict-resource-usage`

**Value:** `true`

**Example:**

```
<property>
<name>yarn.nodemanager.linux-container-executor.cgroups.strict-resource-usage</name>
<value>true</value>
</property>
```



### Note

Irrespective of whether this property is `true` or `false`, at no point will total container CPU usage exceed the limit set in `yarn.nodemanager.resource.percentage-physical-cpu-limit`.

## 2.2. Using CGroups

Strict CGroup CPU limits can be used to constrain CPU processes in mixed workload clusters.

One example of a mixed workload is a cluster that runs both MapReduce and Storm-on-YARN. MapReduce is not CPU-constrained (MapReduce containers do not ask for much CPU). Storm-on-YARN is CPU-constrained: its containers ask for more CPU than memory. As you start adding Storm jobs along with MapReduce jobs, the DRF scheduler attempts to balance memory and CPU resources, but as more CPU-intensive Storm jobs are added, they may begin to take up the majority of the cluster CPU resources.

You can use CGroups along with CPU scheduling to help manage mixed workloads. CGroups provide isolation for CPU-heavy processes such as Storm-on-YARN, thereby enabling you to predictably plan and constrain the CPU-intensive Storm containers.

When you enable strict CGroup CPU limits, each resource gets only what it asks for, even if there is extra CPU available. This would be useful for scenarios involving charge-backs or strict SLA enforcement, where you always need to know exactly what percentage of CPU is being used.

Also, enabling strict CPU limits would make job performance predictable, whereas without setting strict limits a CPU-intensive job would run faster when the cluster was not under heavy use, but slower when more jobs were running in the cluster. Strict CPU limits would therefore also be useful for benchmarking.

You could also use node labels in conjunction with CGroups and CPU scheduling to restrict Storm-on-YARN jobs to a subset of cluster nodes.

If you are using CGroups and want more information on CPU performance, you can review the statistics available in the `/cgroup/cpu/yarn/cpu.stat` file.

## 3. Using CPU Scheduling to Allocate Resources

This chapter describes how to allocate shared CPU and memory resources among users and groups in a Hadoop cluster.

CPU scheduling represents just one aspect of YARN resource management, which also includes CGroups, node labels, archival storage, and memory as storage. CGroups should be used with CPU scheduling to constrain and manage CPU processes.



### Note

You should use CPU scheduling only in a Linux environment, because there is no isolation mechanism (CGroups equivalent) for Windows.

### 3.1. About YARN Resource Allocation

As described in the Capacity Scheduler guide, the fundamental unit of scheduling in YARN is the *queue*. The *capacity* of each queue specifies the percentage of cluster resources that are available for applications submitted to the queue. You can set up queues in a hierarchy that reflects the database structure, resource requirements, and access restrictions required by the various organizations, groups, and users that utilize your cluster resources. When you use the default resource calculator (`DefaultResourceCalculator`) resources are allocated based on memory alone.

You can enable CPU scheduling is enabled by using the Dominant Resource Calculator (`DominantResourceCalculator`) rather than the default resource calculator. The Dominant Resource Calculator is based on the Dominant Resource Fairness (DRF) model of resource allocation.

DRF uses the concept of the *dominant resource* to compare multidimensional resources. The idea is that in a multiresource environment, resource allocation should be determined by the dominant share of an entity (user or queue), which is the maximum share that the entity has been allocated of any resource (memory or CPU). Essentially, the DRF seeks to maximize the minimum dominant share across all entities.

For example, if user A runs CPU-heavy tasks and user B runs memory-heavy tasks, the DRF attempts to equalize CPU share of user A with the memory share of user B. In this case, the DRF allocates more CPU and less memory to the tasks run by user A, and allocates less CPU and more memory to the tasks run by user B. In the single resource case – where all jobs are requesting the same resources – the DRF reduces to max-min fairness for that resource.

When the Dominant Resource Calculator, queues are still used to allocate cluster resources, but both CPU and memory are taken into consideration. In the DRF model, resource allocation takes into account the dominant resource required by a process. The Dominant Resource Calculator schedules both CPU-heavy and memory-heavy processes on the same node. CPU-heavy processes (such as Storm-on-YARN) receive more CPU and less memory. Memory-heavy processes (such as MapReduce) receive more memory and less CPU. The DRF

scheduler is designed to fairly distribute memory and CPU resources among different types of processes in a mixed-workload cluster.

For more information about DRF, see [Dominant Resource Fairness: Fair Allocation of Multiple Resources](#).

## 3.2. Configuring CPU Scheduling

Use the following steps to configure CPU scheduling.

### 1. Enable CPU Scheduling in `capacity-scheduler.xml`

CPU scheduling is not enabled by default. To enable CPU scheduling, set the following property in the `/etc/hadoop/conf/capacity-scheduler.xml` file on the ResourceManager and NodeManager hosts:

Replace the `DefaultResourceCalculator` portion of the `<value>` string with `DominantResourceCalculator`:

**Property:** `yarn.scheduler.capacity.resource-calculator`

**Value:** `org.apache.hadoop.yarn.util.resource.DominantResourceCalculator`

```
<property>
  <name>yarn.scheduler.capacity.resource-calculator</name>
  <!-- <value>org.apache.hadoop.yarn.util.resource.
DefaultResourceCalculator</value> -->
  <value>org.apache.hadoop.yarn.util.resource.DominantResourceCalculator</
value>
</property>
```

### 2. Set Vcores in `yarn-site.xml`

In YARN, vcores (virtual cores) are used to normalize CPU resources across the cluster. The `yarn.nodemanager.resource.cpu-vcores` value sets the number of CPU cores that can be allocated for containers.

You should set the number of vcores to match the number of physical CPU cores on the NodeManager hosts. Set the following property in the `/etc/hadoop/conf/yarn-site.xml` file on the ResourceManager and NodeManager hosts:

**Property:** `yarn.nodemanager.resource.cpu-vcores`

**Value:** `<number_of_physical_cores>`

Example:

```
<property>
  <name>yarn.nodemanager.resource.cpu-vcores</name>
  <value>16</value>
</property>
```

You also should enable CGroups along with CPU scheduling. CGroups are used as the isolation mechanism for CPU processes. With CGroups strict enforcement activated, each CPU process receives only the resources it requests. Without CGroups activated, the DRF scheduler attempts to balance the load, but unpredictable behavior may occur.

## 3.3. Using CPU Scheduling

### MapReduce Jobs Only

If you primarily run MapReduce jobs on your cluster, you probably will not see much of a change in performance if you enable CPU scheduling. The dominant resource for MapReduce is memory, so the DRF scheduler continues to balance MapReduce jobs in a manner similar to the default resource calculator. In the case of a single resource, the DRF reduces to max-min fairness for that resource.

### Mixed Workloads

One example of a mixed workload is a cluster that runs both MapReduce and Storm on YARN. MapReduce is not CPU-constrained (MapReduce containers do require much CPU). Storm on YARN is CPU-constrained: its containers require more CPU than memory. As you start adding Storm jobs along with MapReduce jobs, the DRF scheduler tries to balance memory and CPU resources, but you may start to see some degradation in performance. If you then add more CPU-intensive Storm jobs, individual jobs start to take longer to run as the cluster CPU resources are consumed.

CGroups can be used along with CPU scheduling to help manage mixed workloads. CGroups provides isolation for CPU-intensive processes such as Storm on YARN, thereby enabling you to predictably plan and constrain the CPU-intensive Storm containers.

You can also use node labels in conjunction with CPU scheduling and CGroups to restrict Storm on YARN jobs to a subset of cluster nodes.

## 4. Log Aggregation for Long-running Applications

This chapter describes how to use log aggregation to collect logs for long-running YARN applications.

In Hadoop logs are collected for an application only when it finishes running. This works well for applications that only run for a short time, but is not ideal for long-running applications such as Storm and HBase running on YARN using Slider.

If an application runs for days or weeks, it is useful to collect log information while the application is running. This log information can be used to:

- Debug hardware and software issues
- Review and optimize application performance
- Review application resource utilization

A long-running application may generate a large amount of log information. The application can use log rotation to prevent the log file from becoming excessively large. The YARN NodeManager will periodically aggregate the latest completed log files and make them accessible.

### 4.1. Enable Log Aggregation

Log aggregation is enabled in the `yarn-site.xml` file. The `yarn.log-aggregation-enable` property enables log aggregation for running applications. You must also specify a log aggregation time interval using the `yarn.nodemanager.log-aggregation.roll-monitoring-interval-seconds` property. The logs for running applications are aggregated at the specified interval. The minimum monitoring interval value is 3600 seconds (one hour).

You can also set the monitoring interval value to -1 to disable log aggregation for running applications, and wait until the application finishes running to enable log aggregation.

```
<property>
<name>yarn.log-aggregation-enable</name>
<value>>true</value>
</property>

<property>
<name>yarn.nodemanager.log-aggregation.roll-monitoring-interval-seconds</
name>
<value>3600</value>
</property>
```



#### Note

Clients should roll over their logs using a log roll-over application such as log4j.

## 4.2. Including and Excluding Log Files in YARN Applications Running on Slider

For YARN applications running on Slider, log aggregation is specified in the `global` section of the `resources.json` configuration file:

```
"global": { "yarn.log.include.patterns": "", "yarn.log.exclude.patterns": ""
},
```

If `yarn.log.include.patterns` is empty, all container logs are included. You can specify the name(s) of log files (for example, `agent.log`) that you do not want to aggregate using `yarn.log.exclude.patterns`.

For example, the following `resources.json` property settings will aggregate all logs beginning with "std", but exclude the `stderr` log.

```
"global": { "yarn.log.include.patterns": "std*", "yarn.log.exclude.patterns":
"stderr"
},
```

The aggregated logs are stored in the HDFS `/app-logs/` directory. The following command can be used to retrieve the logs: `yarn logs -applicationId <app_id>`



### Note

For applications deployed directly on YARN, you can use `LogAggregationContext` inside `ApplicationSubmissionContext` to specify the include and exclude patterns.

## 5. Node Labels

This chapter describes how to use Node labels to run YARN applications on cluster nodes that have a specified node label. Node labels can be set as `exclusive` or `shareable`:

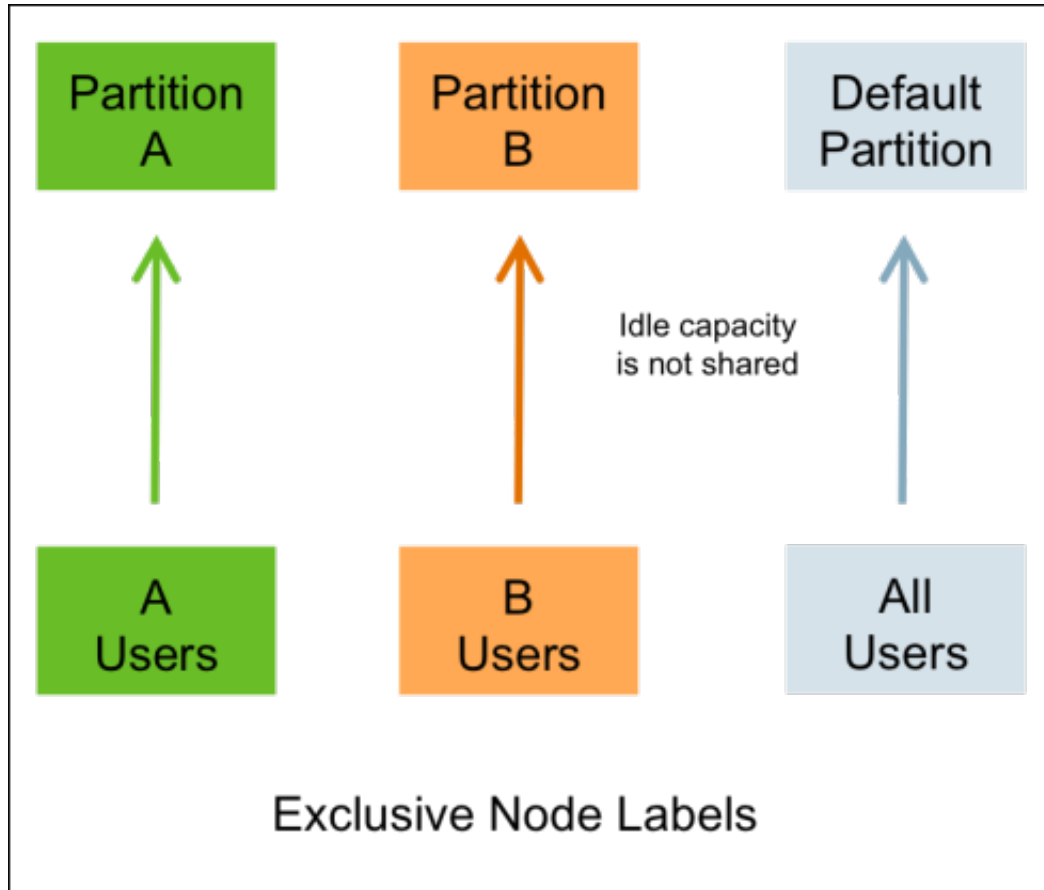
- `exclusive` – Access is restricted to applications running in queues associated with the node label.
- `shareable` – If idle capacity is available on the labeled node, resources are shared with all applications in the cluster.

As discussed in [Capacity Scheduler](#), the fundamental unit of scheduling in YARN is the queue. The capacity of each queue specifies the percentage of cluster resources that are available for applications submitted to the queue. Queues can be set up in a hierarchy that reflects the resource requirements and access restrictions required by the various organizations, groups, and users that utilize cluster resources.

Node labels enable you partition a cluster into sub-clusters so that jobs can be run on nodes with specific characteristics. For example, you can use node labels to run memory-intensive jobs only on nodes with a larger amount of RAM. Node labels can be assigned to cluster nodes, and specified as `exclusive` or `shareable`. You can then associate node labels with capacity scheduler queues. Each node can have only one node label.

### Exclusive Node Labels

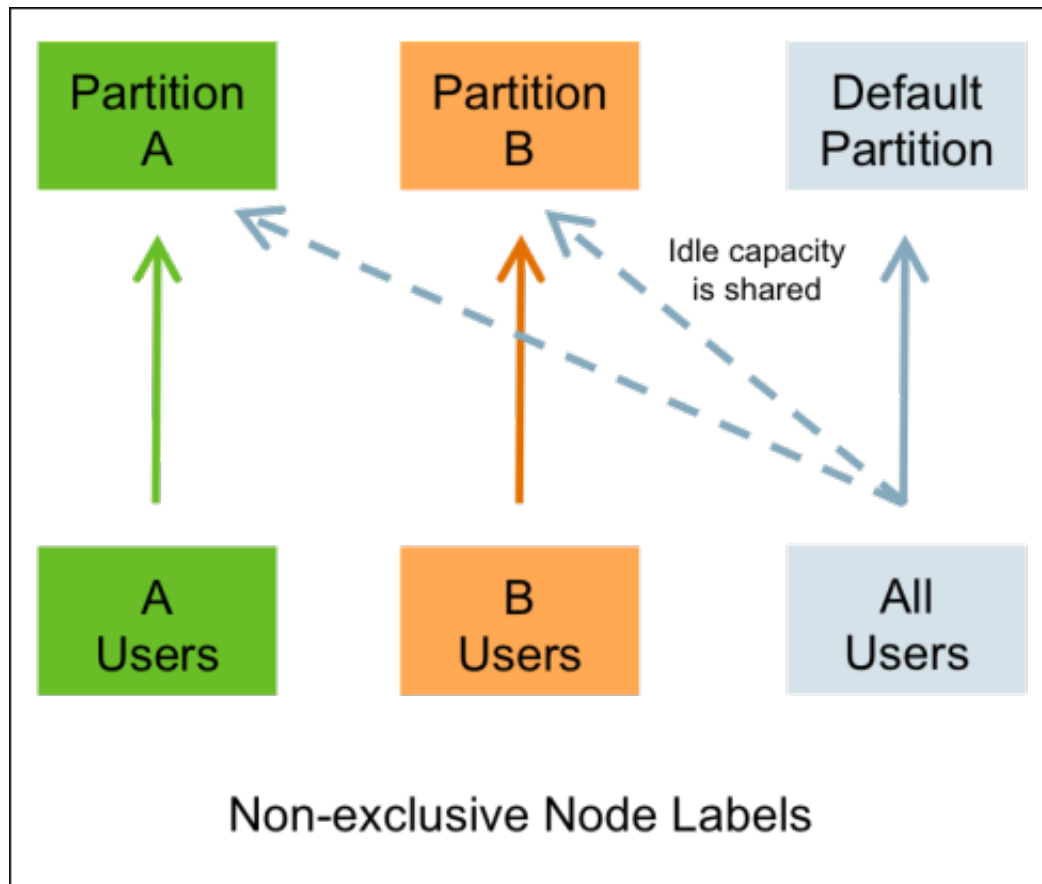
When a queue is associated with one or more exclusive node labels, all applications submitted by the queue have exclusive access to nodes with those labels.



### Shareable Node Labels

When a queue is associated with one or more shareable (non-exclusive) node labels, all applications submitted by the queue get first priority on nodes with those labels. If idle capacity is available on the labeled nodes, resources are shared with other non-labeled applications in the cluster. Non-labeled applications will be preempted if labeled applications request new resources on the labeled nodes.





### Queues without Node Labels

If no node label is assigned to a queue, the applications submitted by the queue can run on any node without a node label, and on nodes with shareable node labels if idle resources are available.

### Preemption

Labeled applications that request labeled resources preempt non-labeled applications on labeled nodes. If a labeled resource is not explicitly requested, the normal rules of preemption apply. Non-labeled applications cannot preempt labeled applications running on labeled nodes.

## 5.1. Configuring Node Labels

To enable node labels, make the following configuration changes on the YARN ResourceManager host.

### 1. Create a Label Directory in HDFS

Use the following commands to create a "node-labels" directory in which to store the node labels in HDFS.

```
sudo su hdfs
hadoop fs -mkdir -p /yarn/node-labels
hadoop fs -chown -R yarn:yarn /yarn
```

```
hadoop fs -chmod -R 700 /yarn
```

`-chmod -R 700` specifies that only the `yarn` user can access the "node-labels" directory.

You can then use the following command to confirm that the directory was created in HDFS.

```
hadoop fs -ls /yarn
```

The new node label directory should appear in the list returned by the following command. The owner should be `yarn`, and the permission should be `drwx`.

```
Found 1 items
drwx----- - yarn yarn 0 2014-11-24 13:09 /yarn/node-labels
```

Use the following commands to create a `/user/yarn` directory that is required by the distributed shell.

```
hadoop fs -mkdir -p /user/yarn
hadoop fs -chown -R yarn:yarn /user/yarn
hadoop fs -chmod -R 700 /user/yarn
```

The preceding commands assume that the `yarn` user will be submitting jobs with the distributed shell. To run the distributed shell with a different user, create the user, then use `/user/<user_name>` in the file paths of the commands above to create a new user directory.

## 2. Configure YARN for Node Labels

Add the following properties to the `/etc/hadoop/conf/yarn-site.xml` file on the ResourceManager host.

Set the following property to enable node labels:

```
<property>
  <name>yarn.node-labels.enabled</name>
  <value>>true</value>
</property>
```

Set the following property to reference the HDFS node label directory:

```
<property>
  <name>yarn.node-labels.fs-store.root-dir</name>
  <value>hdfs://<host>:<port>/<absolute_path_to_node_label_directory></
value>
</property>
```

For example:

```
<property>
  <name>yarn.node-labels.fs-store.root-dir</name>
  <value>hdfs://node-1.example.com:8020/yarn/node-labels/</value>
</property>
```

## 3. Start or Restart the YARN ResourceManager

In order for the configuration changes in the `yarn-site.xml` file to take effect, you must stop and restart the YARN ResourceManager if it is running, or start the ResourceManager

if it is not running. To start or stop the ResourceManager, use the applicable commands in [Controlling HDP Services Manually](#).

#### 4. Add Node Labels

Use the following command format to add node labels. You should run these commands as the `yarn` user. Node labels must be added before they can be assigned to nodes and associated with queues.

```
sudo su yarn
yarn radmin -addToClusterNodeLabels "<label1>(exclusive=<true|false>),
<label2>(exclusive=<true|false>)"
```



#### Note

If `exclusive` is not specified, the default value is `true`.

For example, the following commands add the node label "x" as exclusive, and "y" as shareable (non-exclusive).

```
sudo su yarn
yarn radmin -addToClusterNodeLabels "x(exclusive=true),y(exclusive=false)"
```

You can use the `yarn cluster --list-node-labels` command to confirm that node labels have been added:

```
[root@node-1 /]# yarn cluster --list-node-labels
15/07/11 13:55:43 INFO impl.TimelineClientImpl: Timeline service address:
http://node-1.example.com:8188/ws/v1/timeline/
15/07/11 13:55:43 INFO client.RMPProxy: Connecting to ResourceManager at
node-1.example.com/240.0.0.10:8050
Node Labels: <x:exclusivity=true>,<y:exclusivity=false>
```

You can use the following command format to remove node labels:

```
yarn radmin -removeFromClusterNodeLabels "<label1>,<label2>"
```



#### Note

You cannot remove a node label if it is associated with a queue.

#### 5. Assign Node Labels to Cluster Nodes

Use the following command format to add or replace node label assignments on cluster nodes:

```
yarn radmin -replaceLabelsOnNode "<node1>:<port>=<label1> <node2>:<port>=
<label2>"
```

For example, the following commands assign node label "x" to "node-1.example.com", and node label "y" to "node-2.example.com".

```
sudo su yarn
yarn radmin -replaceLabelsOnNode "node-1.example.com=x node-2.example.com=y"
```



#### Note

You can only assign one node label to each node. Also, if you do not specify a port, the node label change will be applied to all NodeManagers on the host.

To remove node label assignments from a node, use `-replaceLabelsOnNode`, but do not specify any labels. For example, you would use the following commands to remove the "x" label from node-1.example.com:

```
sudo su yarn
yarn radmin -replaceLabelsOnNode "node-1.example.com"
```

## 6. Associating Node Labels with Queues

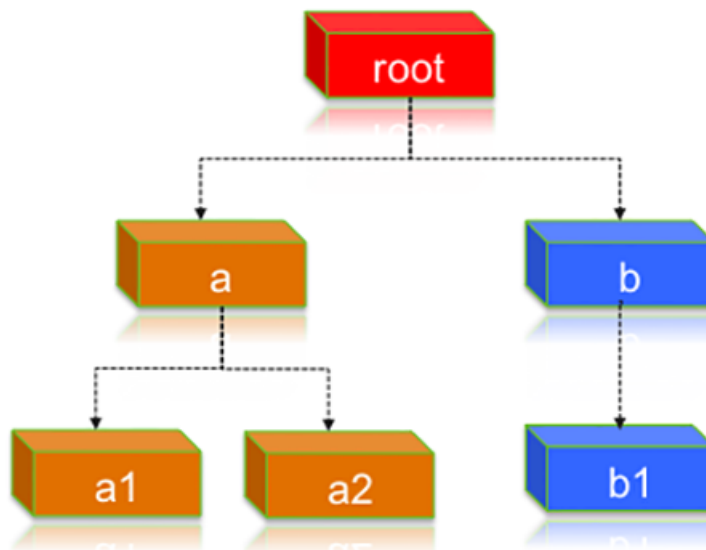
Now that we have created node labels, we can associate them with queues in the `/etc/hadoop/conf/capacity-scheduler.xml` file.

You must specify capacity on each node label of each queue, and also ensure that the sum of capacities of each node-label of direct children of a parent queue at every level is equal to 100%. Node labels that a queue can access (accessible node labels of a queue) must be the same as, or a subset of, the accessible node labels of its parent queue.

### Example:

Assume that a cluster has a total of 8 nodes. The first 3 nodes (n1-n3) have node label=x, the next 3 nodes (n4-n6) have node label=y, and the final 2 nodes (n7, n8) do not have any node labels. Each node can run 10 containers.

The queue hierarchy is as follows:



Assume that queue "a" can access node labels "x" and "y", and queue "b" can only access node label "y". By definition, nodes without labels can be accessed by all queues.

Consider the following example label configuration for the queues:

`capacity(a) = 40`, `capacity(a, label=x) = 100`, `capacity(a, label=y) = 50`; `capacity(b) = 60`, `capacity(b, label=y) = 50`

This means that:

- Queue "a" can access 40% of the resources on nodes without any labels, 100% of the resources on nodes with label=x, and 50% of the resources on nodes with label=y.

- Queue “b” can access 60% of the resources on nodes without any labels, and 50% of the resources on nodes with label=y.

You can also see that for this configuration:

$\text{capacity}(a) + \text{capacity}(b) = 100$   
 $\text{capacity}(a, \text{label}=x) + \text{capacity}(b, \text{label}=x)$  (b cannot access label=x, it is 0) = 100  
 $\text{capacity}(a, \text{label}=y) + \text{capacity}(b, \text{label}=y) = 100$

For child queues under the same parent queue, the sum of the capacity for each label should equal 100%.

Similarly, we can set the capacities of the child queues a1, a2, and b1:

a1 and a2:  $\text{capacity}(a.a1) = 40$ ,  $\text{capacity}(a.a1, \text{label}=x) = 30$ ,  $\text{capacity}(a.a1, \text{label}=y) = 50$   
 $\text{capacity}(a.a2) = 60$ ,  $\text{capacity}(a.a2, \text{label}=x) = 70$ ,  $\text{capacity}(a.a2, \text{label}=y) = 50$   
 b1:  $\text{capacity}(b.b1) = 100$   $\text{capacity}(b.b1, \text{label}=y) = 100$

You can see that for the a1 and a2 configuration:

$\text{capacity}(a.a1) + \text{capacity}(a.a2) = 100$   
 $\text{capacity}(a.a1, \text{label}=x) + \text{capacity}(a.a2, \text{label}=x) = 100$   
 $\text{capacity}(a.a1, \text{label}=y) + \text{capacity}(a.a2, \text{label}=y) = 100$

How many resources can queue a1 access?

Resources on nodes without any labels: Resource = 20 (total containers that can be allocated on nodes without label, in this case n7, n8) \* 40% (a.capacity) \* 40% (a.a1.capacity) = 3.2 (containers)

Resources on nodes with label=x

Resource = 30 (total containers that can be allocated on nodes with label=x, in this case n1-n3) \* 100% (a.label-x.capacity) \* 30% = 9 (containers)

To implement this example configuration, you would add the following properties in the `etc/hadoop/conf/capacity-scheduler.xml` file.

```
<property>
<name>yarn.scheduler.capacity.root.queues</name>
<value>a,b</value>
</property>

<property>
<name>yarn.scheduler.capacity.root.accessible-node-labels.x.capacity</name>
<value>100</value>
</property>

<property>
<name>yarn.scheduler.capacity.root.accessible-node-labels.y.capacity</name>
<value>100</value>
</property>

<!-- configuration of queue-a -->
<property>
<name>yarn.scheduler.capacity.root.a.accessible-node-labels</name>
<value>x,y</value>
</property>

<property>
<name>yarn.scheduler.capacity.root.a.capacity</name>
```

```
<value>40</value>
</property>

<property>
<name>yarn.scheduler.capacity.root.a.accessible-node-labels.x.capacity</name>
<value>100</value>
</property>

<property>
<name>yarn.scheduler.capacity.root.a.accessible-node-labels.y.capacity</name>
<value>50</value>
</property>

<property>
<name>yarn.scheduler.capacity.root.a.queues</name>
<value>a1,a2</value>
</property>

<!-- configuration of queue-b -->
<property>
<name>yarn.scheduler.capacity.root.b.accessible-node-labels</name>
<value>y</value>
</property>

<property>
<name>yarn.scheduler.capacity.root.b.capacity</name>
<value>60</value>
</property>

<property>
<name>yarn.scheduler.capacity.root.b.accessible-node-labels.y.capacity</name>
<value>50</value>
</property>

<property>
<name>yarn.scheduler.capacity.root.b.queues</name>
<value>b1</value>
</property>

<!-- configuration of queue-a.a1 -->
<property>
<name>yarn.scheduler.capacity.root.a.a1.accessible-node-labels</name>
<value>x,y</value>
</property>

<property>
<name>yarn.scheduler.capacity.root.a.a1.capacity</name>
<value>40</value>
</property>

<property>
<name>yarn.scheduler.capacity.root.a.a1.accessible-node-labels.x.capacity</
name>
<value>30</value>
</property>

<property>
<name>yarn.scheduler.capacity.root.a.a1.accessible-node-labels.y.capacity</
name>
<value>50</value>
```

```
</property>

<!-- configuration of queue-a.a2 -->
<property>
<name>yarn.scheduler.capacity.root.a.a2.accessible-node-labels</name>
<value>x,y</value>
</property>

<property>
<name>yarn.scheduler.capacity.root.a.a2.capacity</name>
<value>60</value>
</property>

<property>
<name>yarn.scheduler.capacity.root.a.a2.accessible-node-labels.x.capacity</
name>
<value>70</value>
</property>

<property>
<name>yarn.scheduler.capacity.root.a.a2.accessible-node-labels.y.capacity</
name>
<value>50</value>
</property>

<!-- configuration of queue-b.b1 -->
<property>
<name>yarn.scheduler.capacity.root.b.b1.accessible-node-labels</name>
<value>y</value>
</property>

<property>
<name>yarn.scheduler.capacity.root.b.b1.capacity</name>
<value>100</value>
</property>

<property>
<name>yarn.scheduler.capacity.root.b.b1.accessible-node-labels.y.capacity</
name>
<value>100</value>
</property>
```

## 7. Refresh Queues

After adding or updating queue node label properties in the `capacity-scheduler.xml` file, you must run the following commands to refresh the queues:

```
sudo su yarn
yarn rmadmin -refreshQueues
```

## 8. Confirm Node Label Assignments

You can use the following commands to view information about node labels.

- List all running nodes in the cluster: `yarn node -list`

Example:

```
[root@node-1 /]# yarn node -list
14/11/21 12:14:06 INFO impl.TimelineClientImpl: Timeline service address:
http://node-1.example.com:8188/ws/v1/timeline/
14/11/21 12:14:07 INFO client.RMProxy: Connecting to ResourceManager at
node-1.example.com/240.0.0.10:8050
Total Nodes:3
Node-Id Node-State Node-Http-Address Number-of-Running-Containers
node-3.example.com:45454 RUNNING node-3.example.com:50060 0
node-1.example.com:45454 RUNNING node-1.example.com:50060 0
node-2.example.com:45454 RUNNING node-2.example.com:50060 0
```

- List all node labels in the cluster: `yarn cluster --list-node-labels`

Example:

```
[root@node-1 /]# yarn cluster --list-node-labels
15/07/11 13:55:43 INFO impl.TimelineClientImpl: Timeline service address:
http://node-1.example.com:8188/ws/v1/timeline/
15/07/11 13:55:43 INFO client.RMProxy: Connecting to ResourceManager at
node-1.example.com/240.0.0.10:8050
Node Labels: <x:exclusivity=true>,<y:exclusivity=false>
```

- List the status of a node (includes node labels): `yarn node -status <Node_ID>`

Example:

```
[root@node-1 /]# yarn node -status node-1.example.com:45454
14/11/21 06:32:35 INFO impl.TimelineClientImpl: Timeline service address:
http://node-1.example.com:8188/ws/v1/timeline/
14/11/21 06:32:35 INFO client.RMProxy: Connecting to ResourceManager at
node-1.example.com/240.0.0.10:8050
Node Report :
Node-Id : node-1.example.com:45454
Rack : /default-rack
Node-State : RUNNING
Node-Http-Address : node-1.example.com:50060
Last-Health-Update : Fri 21/Nov/14 06:32:09:473PST
Health-Report :
Containers : 0
Memory-Used : 0MB
Memory-Capacity : 1408MB
CPU-Used : 0 vcores
CPU-Capacity : 8 vcores
Node-Labels : x
```

Node labels are also displayed in the ResourceManager UI on the Nodes and Scheduler pages.

### Specifying a Child Queue with No Node Label

If no node label is specified for a child queue, it inherits the node label setting of its parent queue. To specify a child queue with no node label, use a blank space for the value of the node label.

For example:



```
<property>
<name>yarn.scheduler.capacity.root.b.b1.accessible-node-labels</name>
<value> </value>
</property>
```

### Setting a Default Queue Node Label Expression

You can set a default node label on a queue. The default node label will be used if no label is specified when the job is submitted.

For example, to set "x" as the default node label for queue "b1", you would add the following property in the `capacity-scheduler.xml` file.

```
<property>
<name>yarn.scheduler.capacity.root.b.b1.default-node-label-expression</name>
<value>x</value>
</property>
```

## 5.2. Using Node Labels

### ResourceManger UI


The ResourceManager UI displays the node labels on the Node Labels page, the Nodes page, and also on the Scheduler page.

Node labels of the cluster

Label Name	Label Type	Num Of Active NMs	Total Resource
DEFAULT PARTITION	Exclusive Partition	0	<memory:0, vCores:0>
x	Exclusive Partition	1	<memory:1408, vCores:8>
y	Non Exclusive Partition	1	<memory:1408, vCores:8>

Nodes of the cluster

Node Labels	Rack	Node State	Node Address	Node HTTP Address	Last health-update	Health-report	Containers	Mem Used	Mem Avail	VCores Used	VCores Avail	Version
x	/default-rack	RUNNING	node-1.example.com:45454	node-1.example.com:50060	Sun Jul 12 10:22:06 -0700 2015		0	0 B	1.38 GB	0	8	2.7.1.2.3.0.0-2525
y	/default-rack	RUNNING	node-2.example.com:45454	node-2.example.com:50060	Sun Jul 12 10:22:38 -0700 2015		0	0 B	1.38 GB	0	8	2.7.1.2.3.0.0-2525



NEW,NEW\_SAVING,SUBMITTED,ACCEPTED,RUNNING Applications

Cluster Metrics

Apps Submitted	Apps Pending	Apps Running	Apps Completed	Containers Running	Memory Used	Memory Total	Memory Reserved	VCores Used	VCores Total	VCores Reserved	Active Nodes	Decommissioned Nodes	Lost Nodes	Unhealthy Nodes	Rebooted Nodes
0	0	0	0	0	0 B	0 B	0 B	0	0	0	2	0	0	0	0

Scheduler Metrics

Scheduler Type	Scheduling Resource Type	Minimum Allocation	Maximum Allocation
Capacity Scheduler	[MEMORY]	<memory:256, vCores:1>	<memory:1408, vCores:8>

Application Queues

Legend: Capacity Used (over capacity) Max Capacity

- Partition: <DEFAULT\_PARTITION> <memory:0, vCores:0> 0.0% used
- Queue: root 0.0% used
- Queue: a 0.0% used
  - Queue: a.a1 0.0% used

'a.a1' Queue Status for Partition '<DEFAULT\_PARTITION>'

Used Capacity:	0.0%
Configured Capacity:	40.0%
Configured Max Capacity:	100.0%
Absolute Used Capacity:	0.0%
Absolute Configured Capacity:	16.0%
Absolute Configured Max Capacity:	100.0%
Used Resources:	<memory:0, vCores:0>

'a.a1' Queue Status

Queue State:	RUNNING
Num Schedulable Applications:	0
Num Non-Schedulable Applications:	0
Num Containers:	0
Max Applications:	1600
Max Applications Per User:	1600
Max Application Master Resources:	<memory:0, vCores:0>
Used Application Master Resources:	<memory:0, vCores:0>
Max Application Master Resources Per User:	<memory:0, vCores:0>
Configured Minimum User Limit Percent:	100%
Configured User Limit Factor:	1.0
Accessible Node Labels:	x,y
Ordering Policy:	FIFOOrderingPolicy
Preemption:	disabled

The screenshot displays the Hadoop YARN web interface. At the top, it shows the Hadoop logo and the text "NEW, NEW\_SAVING, SUBMITTED, ACCEPTED, RUNNING Applications". The user is logged in as "gopher".

On the left, there is a navigation menu with options like "Cluster", "About Nodes", "Node Labels", "Applications", and "Scheduler" (which is highlighted with a red box). Below the menu are "Tools" and "Scheduler" options.

The main content area is divided into several sections:

- Cluster Metrics:** A table showing various metrics such as Apps Submitted, Pending, Running, Completed, Containers Running, Memory Used, Total, Reserved, VNodes Used, Total, Reserved, Active Nodes, Decommissioned Nodes, Lost Nodes, Unhealthy Nodes, and Rebooted Nodes.
- Scheduler Metrics:** A table showing Scheduler Type (Capacity Scheduler), Scheduling Resource Type (MEMORY), Minimum Allocation (<memory:256, vCores:1>), and Maximum Allocation (<memory:1408, vCores:8>).
- Application Queues:** A section showing a legend for Capacity (green), Used (over capacity) (orange), and Max Capacity (grey). Below this, there are several queue status bars for different partitions and queues (root, a, b, b.b1).
- 'b.b1' Queue Status for Partition '<DEFAULT\_PARTITION>':** A detailed view of the queue status, including Used Capacity (0.0%), Configured Capacity (100.0%), Configured Max Capacity (100.0%), Absolute Used Capacity (0.0%), Absolute Configured Capacity (60.0%), Absolute Configured Max Capacity (100.0%), and Used Resources (<memory:0, vCores:0>).
- 'b.b1' Queue Status:** A detailed view of the queue state, including Queue State (RUNNING), Num Schedulable Applications (0), Num Non-Schedulable Applications (0), Num Containers (0), Max Applications (6000), Max Applications Per User (6000), Max Application Master Resources (<memory:0, vCores:0>), Used Application Master Resources (<memory:0, vCores:0>), Max Application Master Resources Per User (<memory:0, vCores:0>), Configured Minimum User Limit Percent (100%), Configured User Limit Factor (1.0), Accessible Node Labels (y) (highlighted with a red box), Ordering Policy (FIFOOrderingPolicy), and Preemption (disabled).

## Setting Node Labels when Submitting Jobs

You can use the following methods to specify node labels when submitting jobs:

- `ApplicationSubmissionContext.setNodeLabelExpression(<node_label_expression>)`  
– sets the node label expression for all containers of the application.
- `ResourceRequest.setNodeLabelExpression(<node_label_expression>)`  
– sets the node label expression for individual resource requests. This will override the node label expression set in `ApplicationSubmissionContext.setNodeLabelExpression(<node_label_expression>)`.
- Specify `setAMContainerResourceRequest.setNodeLabelExpression` in `ApplicationSubmissionContext` to indicate the expected node label for the `ApplicationMaster` container.

You can use one of these methods to specify a node label expression, and `-queue` to specify a queue, when you submit YARN jobs using the distributed shell client. If the queue has a label that satisfies the label expression, it will run the job on the labeled node(s). If the label expression does not reference a label associated with the specified queue, the job will not run and an error will be returned. If no node label is specified, the job will run only on nodes without a node label, and on nodes with shareable node labels if idle resources are available.



## Note

You can only specify one node label in the `.setNodeLabelExpression` methods.

For example, the following commands run a simple YARN distributed shell "sleep for a long time" job. In this example we are asking for more containers than the cluster can run so we can see which node the job runs on. We are specifying that the job should run on queue "a1", which our user has permission to run jobs on. We are also using the `-node_label_expression` parameter to specify that the job will run on all nodes with label "x".

```
sudo su yarn
hadoop jar /usr/hdp/current/hadoop-yarn-client/hadoop-yarn-applications-
distributedshell.jar
-shell_command "sleep 100" -jar /usr/hdp/current/hadoop-yarn-client/hadoop-
yarn-applications-distributedshell.jar
-num_containers 30 -queue a1 -node_label_expression x
```

If we run this job on the example cluster we configured previously, containers are allocated on node-1, as this node has been assigned node label "x", and queue "a1" also has node label "x":

Node Labels	Rack	Node State	Node Address	Node HTTP Address	Last health-update	Health-report	Containers	Mem Used	Mem Avail	VCores Used	VCores Avail	Version
x	default-rack	RUNNING	node-1.example.com.45454	node-1.example.com.50060	24-Nov-2014 13:34:25		3	768 MB	640 MB	3	5	2.6.0.2.2.0-2041
y	default-rack	RUNNING	node-2.example.com.45454	node-2.example.com.50060	24-Nov-2014 13:34:25		0	0 B	1.38 GB	0	8	2.6.0.2.2.0-2041

The following commands run the same job that we specified for node label "x", but this time we will specify queue "b1" rather than queue "a1".

```
sudo su yarn
hadoop jar /usr/hdp/current/hadoop-yarn-client/hadoop-yarn-applications-
distributedshell.jar
-shell_command "sleep 100000" -jar /usr/hdp/current/hadoop-yarn-client/
hadoop-yarn-applications-distributedshell.jar
-num_containers 30 -queue b1 -node_label_expression x
```

When we attempt to run this job on our example cluster, the job will fail with the following error message because label "x" is not associated with queue "b1".

```
14/11/24 13:42:21 INFO distributedshell.Client: Submitting application to ASM
14/11/24 13:42:21 FATAL distributedshell.Client: Error running Client
org.apache.hadoop.yarn.exceptions.InvalidResourceRequestException: Invalid
resource request, queue=b1 doesn't
have permission to access all labels in resource request. labelExpression of
resource request=x. Queue labels=y
```

## MapReduce Jobs and Node Labels

Currently you cannot specify a node label when submitting a MapReduce job. However, if you submit a MapReduce job to a queue that has a default node label expression, the default node label will be applied to the MapReduce job.

Using default node label expressions tends to constrain larger portions of the cluster, which at some point starts to become counter-productive for jobs – such as MapReduce jobs – that benefit from the advantages offered by distributed parallel processing.

## 6. Running Applications on YARN Using Slider

Apache Slider lets you deploy distributed applications across a Hadoop cluster. Slider leverages the YARN ResourceManager to allocate and distribute components of an application across a cluster.

Key Slider features:

- Run applications on YARN without changing the application code (as long as the application follows Slider developer guidelines). There is no need to develop a custom Application Master or other YARN code.
- Use the application registry for publishing and discovery of dynamic metadata.
- Run multiple instances of applications with different configurations or versions in one Hadoop cluster.
- Expand or shrink application component instances while an application is running.
- Transparently deploy applications in secure Kerberos clusters.
- Aggregate application logs from different containers.
- Run applications on a subset of cluster nodes using YARN node labels.
- Manage application, component, and container failures.

Slider leverages YARN capabilities to manage:

- Application recovery in cases of container failure
- Resource allocation (adding and removing containers)

### 6.1. System Requirements

Running Slider requires the following minimum system configuration:

- Hortonworks Data Platform 2.2
- Required Services: HDFS, YARN and ZooKeeper
- Oracle JDK 1.7 (64-bit)
- OpenSSL
- Python 2.6

### 6.2. Operating System Requirements

Slider is compatible with all operating systems supported by HDP.



### Note

Accumulo on Slider is not supported on Windows, as Accumulo is not currently supported on Windows.

## 6.3. Installing Apache Slider

- Recommended method:

To install Apache Slider using Ambari, select **Actions > Add Service** on the Ambari dashboard, then use the Ambari Add Service wizard to install Apache Slider.

- Alternate method:

To install Apache Slider using the CLI, follow the instructions in the "[Installing Apache Slider](#)" chapter of the Hortonworks *CLI Installation Guide*.

## 6.4. Additional Configuration Steps for Secure Clusters

When running Slider on a secure cluster, you must perform the additional security configuration steps described under "Security Options" on the Apache YARN [Registry Configuration](#) page.



### Note

You do not need to perform the steps described in the "Identifying the system accounts `hadoop.registry.system.acls`" subsection. These steps are performed automatically in HDP.

## 6.5. Running Applications on Slider

The following sections describe how to configure, load, start, and verify Slider applications.

### The Slider Application Specification

Configuring a Slider application includes two specification components: the Resource Specification (`resources.json`) and the Application Configuration (`appConfig.json`).

### The Resource Specification

Slider needs to know what components (and how many components) are in an application package to deploy.

As Slider creates each instance of a component in its own YARN container, it also needs to know what to ask YARN for in terms of **memory** and **CPU** for those containers.

All this information goes into the **Resources Specification** file ("Resource Spec") named `resources.json`. The Resource Specification tells Slider how many instances of each component in the application to deploy, and also the parameters for YARN.

### Resource Specification Example – Apache Memcached

```
{ "schema" : "http://example.org/specification/v2.0.0", "metadata" : {
  }, "global" : {
  }, "components": { "slider-appmaster": {
  }, "MEMCACHED": { "yarn.role.priority": "1", "yarn.component.instances": "1",
  "yarn.vcores": "1", "yarn.memory": "256"
  }
  }
}
```

### The Application Configuration

The Application Configuration file includes parameters that are specific to the application, rather than to YARN. The Application Configuration is applied to the default configuration provided by the application definition and then handed off to the associated component agent.

### Application Configuration Example – memcached

```
{ "schema": "http://example.org/specification/v2.0.0", "metadata": {
  }, "global": { "application.def": "jmemcached-1.0.0.zip", "java_home": "/
usr/jdk64/jdk1.7.0_45", "site.global.additional_cp": "/usr/hdp/current/hadoop-
client/lib/*", "site.global.xmx_val": "256m", "site.global.xms_val": "128m",
"site.global.memory_val": "200M", "site.global.listen_port": "${MEMCACHED.
ALLOCATED_PORT}{PER_CONTAINER}"
  }, "components": { "slider-appmaster": { "jvm.heapsize": "256M"
  }
  }
}
```

## 6.5.1. The Slider Application Package

The Slider application package includes all of the information needed to deploy a YARN application using Slider. It includes the application configuration files, as well as all application artifacts and the scripts required by the application.

Hortonworks provides the following application packages for Accumulo and HBase on Linux:

#### centos6:

```
accumulo_pkg_url=http://public-repo-1.hortonworks.com/HDP/centos6/2.x/updates/
2.4.2.0/slider-app-packages/accumulo/slider-accumulo-app-package-1.7.0.2.4.2.
0-258.zip
hbase_pkg_url=http://public-repo-1.hortonworks.com/HDP/centos6/2.x/updates/2.
4.2.0/slider-app-packages/hbase/slider-hbase-app-package-1.1.2.2.4.2.0-258.zip
```

#### centos7:

```
accumulo_pkg_url=http://public-repo-1.hortonworks.com/HDP/centos7/2.x/updates/
2.4.2.0/slider-app-packages/accumulo/slider-accumulo-app-package-1.7.0.2.4.2.
0-258.zip
hbase_pkg_url=http://public-repo-1.hortonworks.com/HDP/centos7/2.x/updates/2.
4.2.0/slider-app-packages/hbase/slider-hbase-app-package-1.1.2.2.4.2.0-258.zip
```

#### suse11sp3

```
accumulo_pkg_url=http://public-repo-1.hortonworks.com/HDP/centos6/2.x/updates/
2.4.2.0/slider-app-packages/accumulo/slider-accumulo-app-package-1.7.0.2.4.2.
0-258.zip
```



```
hbase_pkg_url=http://public-repo-1.hortonworks.com/HDP/centos6/2.x/updates/2.4.2.0/slider-app-packages/hbase/slider-hbase-app-package-1.1.2.2.4.2.0-258.zip
```

### ubuntu12

```
accumulo_pkg_url=http://public-repo-1.hortonworks.com/HDP/ubuntu12/2.x/updates/2.4.2.0/slider-app-packages/accumulo/slider-accumulo-app-package-1.7.0.2.4.2.0-258.zip  
hbase_pkg_url=http://public-repo-1.hortonworks.com/HDP/ubuntu12/2.x/updates/2.4.2.0/slider-app-packages/hbase/slider-hbase-app-package-1.1.2.2.4.2.0-258.zip
```

### ubuntu14

```
accumulo_pkg_url=http://public-repo-1.hortonworks.com/HDP/ubuntu14/2.x/updates/2.4.2.0/slider-app-packages/accumulo/slider-accumulo-app-package-1.7.0.2.4.2.0-258.zip  
hbase_pkg_url=http://public-repo-1.hortonworks.com/HDP/ubuntu14/2.x/updates/2.4.2.0/slider-app-packages/hbase/slider-hbase-app-package-1.1.2.2.4.2.0-258.zip
```

### debian6

```
accumulo_pkg_url=http://public-repo-1.hortonworks.com/HDP/debian6/2.x/updates/2.4.2.0/slider-app-packages/accumulo/slider-accumulo-app-package-1.7.0.2.4.2.0-258.zip  
hbase_pkg_url=http://public-repo-1.hortonworks.com/HDP/debian6/2.x/updates/2.4.2.0/slider-app-packages/hbase/slider-hbase-app-package-1.1.2.2.4.2.0-258.zip
```

### debian7

```
accumulo_pkg_url=http://public-repo-1.hortonworks.com/HDP/debian7/2.x/updates/2.4.2.0/slider-app-packages/accumulo/slider-accumulo-app-package-1.7.0.2.4.2.0-258.zip  
hbase_pkg_url=http://public-repo-1.hortonworks.com/HDP/debian7/2.x/updates/2.4.2.0/slider-app-packages/hbase/slider-hbase-app-package-1.1.2.2.4.2.0-258.zip
```



### Note

As of HDP 2.3.0, Storm on Slider is no longer supported.

The HDP .msi installer file for Windows includes the application package for HBase on Windows. Accumulo on Slider is not supported on Windows, as Accumulo is not currently supported on Windows.

For more information on Apache Slider application packaging, see [Apache Slider App Packaging](#). For more information on creating a Slider application package for Memcached, see [Defining the Apache Slider package for YARN hosted jmemcached](#).

## 6.5.2. Install the Application Package

Use the following command format to install the application package on YARN.

```
/usr/hdp/current/slider-client/bin/.slider install-package --name <name> --package <package_path_on_disk>
```

## 6.5.3. Start the Application

Once the steps above are completed, the Slider Command Line Interface (CLI) can be used to start the application using the following command format:

```
/usr/hdp/current/slider-client/bin/./slider create <application_name> --
template appConfig.json --resources resources.json
```

Default files (appConfig-default.json and resources-default.json) files are included in each application package.



**Note**

You can create multiple instances of an application by running the Slider create command with different application names. For example, you might change configuration settings in appConfig.json and create a separate instance to evaluate the new configuration.

### 6.5.4. Verify the Application

You can use the Slider status CLI command to verify the application launch:

```
/usr/hdp/current/slider-client/bin/./slider status <application_name>
```

You can also verify the successful launch of the application with the YARN Resource Manager Web UI. In most instances, this UI is accessible via a web browser at port 8088 of the Resource Manager Host:

Cluster	Apps Submitted	Apps Pending	Apps Running	Apps Completed	Containers Running	Memory Used	Memory Total	Memory Reserved	Vcores Used	Vcores Total	Vcores Reserved	Active Nodes	Decommissioned Nodes	Lost Nodes	Unhealthy Nodes	Rebooted Nodes
hb1	5	0	1	4	5	1.29-GB	4.13-GB	0.0	5	24	0	3	0	0	0	0

ID	User	Name	Application Type	Queue	StartTime	FinishTime	State	FinalStatus	Progress	Tracking UI
application_1412546426630_0005	hdfs	org.apache.slider	MAPREDUCE	default	Tue, 07 Oct 2014 20:27:59 GMT	N/A	RUNNING	UNDEFINED		ApplicationMaster
application_1412546426630_0004	hadoopqe	PigLatinIdtest.hadoopqe.080514.29988.pig	MAPREDUCE	default	Sun, 05 Oct 2014 22:10:12 GMT	Sun, 05 Oct 2014 22:10:27 GMT	FINISHED	SUCCEEDED		History
application_1412546426630_0003	hadoopqe	TempletonControllerJob	MAPREDUCE	joblauncher	Sun, 05 Oct 2014 22:08:44 GMT	Sun, 05 Oct 2014 22:10:47 GMT	FINISHED	SUCCEEDED		History
application_1412546426630_0002	hadoopqe	PigLatin.id.pig	MAPREDUCE	default	Sun, 05 Oct 2014 22:02:01 GMT	Sun, 05 Oct 2014 22:02:46 GMT	FINISHED	SUCCEEDED		History
application_1412546426630_0001	hadoopqe	word count	MAPREDUCE	default	Sun, 05 Oct 2014 22:01:02 GMT	Sun, 05 Oct 2014 22:01:51 GMT	FINISHED	SUCCEEDED		History

The specific information for the running application is accessible via the "ApplicationMaster" link that can be seen in the far right column of the row associated with the running application (probably the top row):

**Agentproviderservice cluster: 'hb1'**

- Total number of containers for cluster: 4
- Cluster created: 7 Oct 2014 20:28:09 GMT
- Cluster last reset: N/A
- Cluster running since: 7 Oct 2014 20:28:09 GMT
- Cluster HDFS storage path: hdfs://node-1.example.com:8020/user/hdfs/slider/cluster/hb1/database
- Cluster configuration path: hdfs://node-1.example.com:8020/user/hdfs/slider/cluster/hb1/snaphot

**Agentproviderservice specific information**

- Registry Web Service http://node-2.example.com:54146/ea/registry/v1/service
- Application Master Web UI http://node-2.example.com:24146
- Management REST API http://node-2.example.com:54146/ea/v1/slider/mgmt
- Publisher Service http://node-2.example.com:54146/ea/v1/slider/publisher
- HBASE\_REGIONSERVER Host(s)/Container(s): [node-3.example.com/container\_1412546426630\_0005\_01\_0000003]
- HBASE\_MASTER Host(s)/Container(s): [node-2.example.com/container\_1412546426630\_0005\_01\_0000002]
- HBASE\_THRIFT Host(s)/Container(s): [node-2.example.com/container\_1412546426630\_0005\_01\_0000005]
- slider-appmaster Host(s)/Container(s): [node-2.example.com/container\_1412546426630\_0005\_01\_0000001]
- HBASE\_REST Host(s)/Container(s): [node-1.example.com/container\_1412546426630\_0005\_01\_0000004]

## 6.5.5. Manage the Application Lifecycle

Once started, applications can be stopped, restarted, destroyed, and flexed as follows:

**stop <name> [-force] [--wait time] [--message text]**

Stops the application instance. The running application is stopped. Its settings are retained in HDFS.

The `--wait` argument can specify a time in seconds to wait for the application instance to be stopped.

The `--force` flag causes YARN asked directly to terminate the application instance. The `--message` argument supplies an optional text message to be used in the request: this will appear in the application's diagnostics in the YARN RM UI.

If an unknown (or already stopped) application instance is named, no error is returned.

Example:

```
/usr/hdp/current/slider-client/bin/./slider stop appl
```

**start <name> [--wait milliseconds] [--out <filename>]** Start a stopped application instance, recreating it from its previously saved state.

After the application is launched, if an `--out` argument specified a file, the "YARN application report" will be saved as a .json document into the file specified.

Example

```
/usr/hdp/current/slider-client/bin/./slider start appl
```

**destroy <name>** Destroy a (stopped) application instance. Important: This deletes all persistent data.

Example:

```
/usr/hdp/current/slider-client/bin/./slider destroy appl
```

**flex <name> [--component component count]\*** Flex the number of workers in an application instance to the new value. If greater than before, new copies of the component will be requested. If less, component instances will be destroyed.

This operation has a return value of 0 if the change was submitted. Changes are not immediate and depend on the availability of resources in the YARN cluster

It returns -1 if there is no running application instance.

Examples:

```
slider flex appl --component worker 8 --filesystem hdfs://<host>:<port>  
slider flex appl --component master 2 --filesystem hdfs://<host>:<port>
```

For more information on Slider CLI commands, see the Apache [Slider documentation](#).

You can use the Slider `help` command to display a list of available commands.

```
[root@node-1 /]# /usr/hdp/current/slider-client/bin/./slider help  
2014-10-31 09:20:10,852 [main] INFO client.SliderClient - Usage: slider
```

```

COMMAND [options] where COMMAND is one of
am-suicide      Tell the Slider Application Master to simulate a
                 process failure by terminating itself
build           Build a Slider cluster specification -but do not start it
create         Create a live Slider application
update         Update template for a Slider application
destroy        Destroy a frozen Slider application)
diagnostics    Diagnose the configuration of the running slider
                 application and slider client
exists         Probe for an application running
flex           Flex a Slider application
stop           Stop a running application
help           Print help information
install-package Install the application package in the home directory
                 under sub-folder packages
install-keytab  Install the Kerberos keytab file in the sub-folder
                 'keytabs' of the user's Slider base directory
kill-container Kill a container in the application
list           List running Slider applications
registry       Query the registry of a YARN application
resolve        Query the registry of a YARN application
status         Get the status of an application
start         Start a stopped application
version        Print the Slider version information
Most commands print help when invoked without parameters
2014-10-31 09:20:10,856 [main] INFO util.ExitUtil - Exiting with status 0

```

Most commands display Help when invoked without parameters, similar to the usage statement shown below:

```

[root@node-1 /]# slider status
2014-10-31 09:45:11,817 [main] ERROR main.ServiceLauncher - org.apache.
slider.core.exceptions.BadCommandArgumentsException: Not enough arguments
for action: status Expected minimum 1 but got 0
Usage: slider status <application>
  --manager <manager>           Binding (usually hostname:port)
                                 of the YARN resource manager
                                 (optional)
  --basepath <basePath>         Slider base path on the filesystem
                                 (optional)
  --filesystem <filesystemBinding> Filesystem Binding (optional)
  -D <definitions>              Definitions (optional)
  --debug                        Debug mode (optional)
  -S <sysprops>                 System properties in the form name
                                 value These are set after the JVM
is
                                 started. (optional)
  --out <output>                Output file for the configuration
                                 data (optional)

2014-10-31 09:45:11,826 [main] INFO util.ExitUtil - Exiting with status 40
[root@node-1 /]#

```

## 6.5.6. The Application Registry

Each application publishes several artifacts that can be used by an application administrator or an application client. Typical data published includes the applied configuration, links to application JMX endpoint or monitoring UI, and log folders.

All published data is available at the publisher endpoint that is hosted by Application Master launched by Slider. Here is an example of the publisher endpoint:

```
http://c6401.ambari.apache.org:47457/ws/v1/slider/publisher
```

From this endpoint, you can access several named property containing useful administrative information.

Publisher URI	Description
{publisher-endpoint}/slider/quicklinks	Named URLs that the application publishes.
{publisher-endpoint}/slider/logfolders	Log folders for the application components (YARN should be configured to retain logs).
{publisher-endpoint}/slider/hbase-site	Applied configurations by the application (for example, hbase-site).

Example output from /slider/quicklinks:

```
{
  "description": "QuickLinks",
  "entries": {
    "org.apache.slider.jmx": "http://c6401.ambari.apache.org:50154/api/cluster/summary",
    "org.apache.slider.metrics": "http://c6401.ambari.apache.org/cgi-bin/rrd.py?c=Application2",
    "org.apache.slider.monitor": "http://c6401.ambari.apache.org:41806",
    "org.apache.slider.ganglia": "http://c6401.ambari.apache.org/ganglia?c=Application2"
  },
  "updated": 0,
  "empty": false
}
```

## 6.6. Running HBase on YARN via Slider

Running HBase on YARN via Slider offers the following advantages:

- Easier installation and start-up.
- You can run multiple HBase clusters on one Hadoop cluster.
- Process management (start/stop) is much easier with Slider.
- You can run different versions of HBase on the same Hadoop cluster.
- HBase cluster size is now a parameter that you can easily change.

### 6.6.1. Downloading and Installing the HBase Application Package

To install the HBase Application Package:

1. Make a working directory for the HBase-on-Slider application package:

```
mkdir -p /usr/work/app-packages/hbase
```

2. Download the HBase-on-Slider application package for your operating system to the `/usr/work/app-packages/hbase` directory. For example, use the following command to download the centos6 version:

```
cd /usr/work/app-packages/hbase
wget http://public-repo-1.hortonworks.com/HDP/centos6/2.x/updates/2.4.2.0/
slider-app-packages/hbase/slider-hbase-app-package-1.1.2.2.4.2.0-258.zip
```

For a complete list of available operating system application packages, see [The Slider Application Package](#).

3. Use the following command format to install the application package on YARN:

```
su <user>
/usr/hdp/current/slider-client/bin/./slider install-package --name HBASE --
package <package path>
```

Where `<user>` is the user who will create the HBase application instance.

For example, if you downloaded the HBase package to the `/usr/work/app-packages/hbase` folder:

```
su <user>
/usr/hdp/current/slider-client/bin/./slider install-package --name HBASE --
package /usr/work/app-packages/hbase/2.4.2.0/slider-hbase-app-package-1.1.2.
2.4.2.0-258.zip
```

Note that the `--name` (in this case, "HBASE") should match the value of the `<name>` element in the package `metainfo.xml` file, and that the install destination in HDFS is in the user's home directory under `./slider/package/HBASE/*.zip`

## 6.6.2. Configuring HBase on YARN via Slider

### Accessing the HBase Configuration Files

The HBase application package includes default application and resource specification files. The package includes both non-secure (`appConfig-default.json`) and secure (`appConfig-secured-default.json`) versions of the application specification. You can save these files as another name, and then edit the files to customize the HBase configuration.

You can use the `unzip` command to extract the HBase application and resource specification files from the HBase-on-Slider application package. For example, you would use the following command to extract the files from the HBase application package in the `/usr/work/app-packages/hbase` directory:

```
unzip /usr/work/app-packages/hbase/slider-app-packages/hbase/2.4.2.0/slider-
hbase-app-package-1.1.2.2.4.2.0-258.zip appConfig-default.json -d /usr/work/
app-packages/hbase/
unzip /usr/work/app-packages/hbase/slider-app-packages/hbase/2.4.2.0/slider-
hbase-app-package-1.1.2.2.4.2.0-258.zip resources-default.json -d /usr/work/
app-packages/hbase/
```

You can use the following commands to copy and rename the default HBase application and resource specification files in the `/usr/work/app-packages/hbase/` directory:

```
cp /usr/work/app-packages/hbase/appConfig-default.json /usr/work/app-packages/hbase/appConfig.json
cp /usr/work/app-packages/hbase/resources-default.json /usr/work/app-packages/hbase/resources.json
```

The default configuration files should work as-is, but you can also edit the files to adjust the HBase configuration.

### 6.6.3. Configuring HBase on YARN on Secure Clusters

As previously mentioned, the HBase-on-Slider application package includes both non-secure (`appConfig-default.json`) and secure (`appConfig-secured-default.json`) versions of the application specification.

On secure clusters, you should use the secure version of the application specification. The security-related entries in the `appConfig-secured.json` file are listed below. You will need to replace the values labeled "TODO" with the security settings for the cluster.

```
"site.hbase-site.hbase.coprocessor.master.classes": "org.apache.hadoop.hbase.security.access.AccessController", "site.hbase-site.hbase.coprocessor.region.classes" : "org.apache.hadoop.hbase.security.token.TokenProvider,org.apache.hadoop.hbase.security.access.AccessController", "site.hbase-site.hbase.regionserver.kerberos.principal": "${TODO-RS-PRINCIPAL}", "site.hbase-site.hbase.regionserver.keytab.file": "${TODO-RS-KEYTAB}", "site.hbase-site.hbase.master.kerberos.principal": "${TODO-MASTER-PRINCIPAL}", "site.hbase-site.hbase.master.keytab.file": "${TODO-MASTER-KEYTAB}", "site.hbase-site.hbase.rest.authentication.kerberos.keytab": "${TODO-REST-AUTH-KEYTAB}", "site.hbase-site.hbase.rest.kerberos.principal": "${TODO-REST-PRINCIPAL}", "site.hbase-site.hbase.rest.keytab.file": "${TODO-REST-KEYTAB}", "site.hbase-site.hbase.thrift.keytab.file": "${TODO-THRIFT-KEYTAB}", "site.hbase-site.hbase.thrift.kerberos.principal": "${TODO-THRIFT-PRINCIPAL}", "site.hdfs-site.dfs.namenode.kerberos.principal": "${TODO-NN-PRINCIPAL}", "site.hdfs-site.dfs.namenode.kerberos.internal.spnego.principal": "${TODO-NN-SPNEGO-PRINCIPAL}", "site.hdfs-site.dfs.secondary.namenode.kerberos.principal": "${TODO-SNN-PRINCIPAL}", "site.hdfs-site.dfs.secondary.namenode.kerberos.internal.spnego.principal": "${TODO-SNN-SPNEGO-PRINCIPAL}", "site.hdfs-site.dfs.datanode.kerberos.principal": "${TODO-DN-PRINCIPAL}",
```

Note: rest and thrift components are included above. The values in curly braces need to be filled out.

```
In components section: "slider-appmaster": { "jvm.heapsize": "256M", "slider.am.keytab.local.path": "${TODO-HEADLESS-KEYTAB}", "slider.keytab.principal.name": "${TODO-HEADLESS-PRINCIPAL}"
},
```



#### Note

For more information on configuring HBase-on-Slider on secure clusters, including information about keytab-associated properties and the available keytab distribution options, see [Apache Slider Security](#).

### 6.6.4. Components in HBase on YARN

You can specify the following components (also referred to as "roles") when deploying HBase on YARN via Slider:

- `HBASE_MASTER` # This corresponds to HBase master process.

- HBASE\_REGIONSERVER # This corresponds to region server process.
- HBASE\_REST # This corresponds to REST (aka Stargate) gateway.
- HBASE\_THRIFT # This corresponds to Thrift gateway.
- HBASE\_THRIFT2 # This corresponds to Thrift2 gateway.

The following is a sample `resources.json` file with each of these roles configured:

```
{
  "schema": "http://example.org/specification/v2.0.0",
  "metadata": {
  },
  "global": {
    "yarn.log.include.patterns": "",
    "yarn.log.exclude.patterns": "",
    "yarn.log.interval": "0"
  },
  "components": {
    "HBASE_MASTER": {
      "yarn.role.priority": "1",
      "yarn.component.instances": "1"
    },
    "slider-appmaster": {
    },
    "HBASE_REGIONSERVER": {
      "yarn.role.priority": "2",
      "yarn.component.instances": "4"
    },
    "HBASE_THRIFT": {
      "yarn.role.priority": "4",
      "yarn.component.instances": "1",
      "yarn.memory": "256"
    },
    "HBASE_THRIFT2": {
      "yarn.role.priority": "5",
      "yarn.component.instances": "0",
      "yarn.memory": "256"
    },
    "HBASE_REST": {
      "yarn.role.priority": "3",
      "yarn.component.instances": "1",
      "yarn.memory": "256"
    }
  }
}
```



### Note

Thrift and Thrift2 provide similar functionality. You should use either Thrift or Thrift2, but not both.

## 6.6.5. Launching an HBase Application Instance

Use the following command format to launch HBase:

```
su <user>
```



```
/usr/hdp/current/slider-client/bin/./slider create <hb_cluster_name> --
template appConfig.json --resources resources.json
```

Where <user> is the user who installed the HBase application package.

For example:

```
su <user>
/usr/hdp/current/slider-client/bin/./slider create hb1 --template /usr/work/
app-packages/hbase/appConfig.json --resources /usr/work/app-packages/hbase/
resources.json
```



**Note**

Cluster names may not include uppercase characters.

You can use the Slider CLI status command to verify the application launch:

```
/usr/hdp/current/slider-client/bin/./slider status <application_name>
```

You can also verify the successful launch of the HBase application with the YARN Resource Manager Web UI. In most instances, this UI is accessible via a web browser at port 8088 of the Resource Manager Host:

Cluster	Apps Submitted	Apps Pending	Apps Running	Apps Completed	Containers Running	Memory Used	Memory Total	Memory Reserved	VCores Used	VCores Total	VCores Reserved	Active Nodes	Decommissioned Nodes	Lost Nodes	Unhealthy Nodes	Rebooted Nodes
Cluster	5	0	1	4	5	1.25 GB	4.13 GB	0 B	5	24	0	3	0	0	0	0

ID	User	Name	Application Type	Queue	StartTime	FinishTime	State	FinalStatus	Progress	Tracking UI
application_1412546426630_0005	hdfs	hdfs	org.apache.slider	default	Tue, 07 Oct 2014 20:27:59 GMT	N/A	RUNNING	UNDEFINED	<div style="width: 100%;"></div>	ApplicationMaster
application_1412546426630_0004	hadoopoo	PigLatinIdtest.hadoopoo.080514.29986.pig	MAPREDUCE	default	Sun, 05 Oct 2014 22:10:12 GMT	Sun, 05 Oct 2014 22:10:27 GMT	FINISHED	SUCCEEDED	<div style="width: 100%;"></div>	History
application_1412546426630_0003	hadoopoo	TempletonControllerJob	MAPREDUCE	joblauncher	Sun, 05 Oct 2014 22:08:44 GMT	Sun, 05 Oct 2014 22:10:47 GMT	FINISHED	SUCCEEDED	<div style="width: 100%;"></div>	History
application_1412546426630_0002	hadoopoo	PigLatinId.pig	MAPREDUCE	default	Sun, 05 Oct 2014 22:02:31 GMT	Sun, 05 Oct 2014 22:02:46 GMT	FINISHED	SUCCEEDED	<div style="width: 100%;"></div>	History
application_1412546426630_0001	hadoopoo	word count	MAPREDUCE	default	Sun, 05 Oct 2014 22:01:02 GMT	Sun, 05 Oct 2014 22:01:51 GMT	FINISHED	SUCCEEDED	<div style="width: 100%;"></div>	History

The specific information for the running application is accessible via the “ApplicationMaster” link that can be seen in the far right column of the row associated with the running application (probably the top row):

**Slider App Master**

Agentproviderservice cluster: 'hb1'

- Total number of containers for cluster: 4
- Cluster created: 7 Oct 2014 20:28:09 GMT
- Cluster last Reaced: N/A
- Cluster running since: 7 Oct 2014 20:28:09 GMT
- Cluster HDFS storage path: hdfs://node-1.example.com:8020/user/hdfs/slider/cluster/hb1/database
- Cluster configuration path: hdfs://node-1.example.com:8020/user/hdfs/slider/cluster/hb1/napshot

Agentproviderservice specific information

- Registry Web Service http://node-2.example.com:54146/ea/registry/v1/service
- Application Master Web UI http://node-2.example.com:34146
- Management REST API http://node-2.example.com:54146/ea/v1/slider/mgmt
- Publisher Service http://node-2.example.com:54146/ea/v1/slider/publisher
- HBASE\_REGIONSERVER Host(s)/Container(s): [node-3.example.com/container\_1412546426630\_0005\_01\_0000003]
- HBASE\_MASTER Host(s)/Container(s): [node-2.example.com/container\_1412546426630\_0005\_01\_0000002]
- HBASE\_THRIFT2 Host(s)/Container(s): [node-2.example.com/container\_1412546426630\_0005\_01\_0000005]
- slider appmaster Host(s)/Container(s): [node-2.example.com/container\_1412546426630\_0005\_01\_0000001]
- HBASE\_REST Host(s)/Container(s): [node-1.example.com/container\_1412546426630\_0005\_01\_0000004]

## 6.6.6. Deployment Considerations

For HA purposes, it is not advisable to deploy two Masters on the same host.

Thrift/Thrift2/REST gateways are likely to receive heavy traffic. They should be deployed on dedicated hosts.

### Memory Considerations for Running One Component on a Node

You can adjust the amount of memory given to a component to achieve mutual exclusion of components, depending upon the NodeManager configuration on each node. Typically all nodes have the same value independent of the actual memory.

Assuming the memory capacity for each NodeManager is known (`yarn.nodemanager.resource.memory-mb`), you can configure the component to ask for 51% (basically more than half) of the maximum capacity. You also need to ensure that the maximum possible memory allocation (`yarn.scheduler.maximum-allocation-mb`) allows that value.

For example, if `yarn.nodemanager.resource.memory-mb = yarn.scheduler.maximum-allocation-mb = 2048` Set `yarn.memory = 1280` for the RegionServer.

Then set the HBase Master/RegionServer max memory to be 256 MB less than that to allow for the agent memory consumption # the agent should not be more than 100 MB but you can just assume that it consumes ~256 MB. So you can set the HBase Master/RegionServer variables for memory limit to 1024 MB.

### Log Aggregation

Log aggregation is specified in the `global` section of `resources.json`:

```
"global": {
    "yarn.log.include.patterns": "",
    "yarn.log.exclude.patterns": "",
    "yarn.log.interval": "0"
},
```

The `yarn.log.interval` unit is seconds.

You can specify the name(s) of log files (for example, `agent.log`) that you do not want to aggregate using `yarn.log.exclude.patterns`.

The aggregated logs are stored in the HDFS `/app-logs/` directory.

The following command can be used to retrieve the logs:

```
yarn logs -applicationId <app_id>
```

### Reserving Nodes for HBase

You can use YARN node labels to reserve cluster nodes for applications and their components.

Node labels are specified with the `yarn.label.expression` property. If no label is specified, only non-labeled nodes are used when allocating containers for component instances.

If label expression is specified for `slider-appmaster`, then it also becomes the default label expression for all components. To take advantage of default label expression, leave out the property (see `HBASE_REGIONSERVER` in the example). A label expression with an empty string (`"yarn.label.expression": ""`) is equivalent to nodes without labels.

For example, the following is a `resources.json` file for an HBase cluster that uses node labels. The label for the application instance is `"hbase1"`, and the label expression for the `HBASE_MASTER` components is `"hbase1_master"`. `HBASE_REGIONSERVER` instances will automatically use label `"hbase1"`. Alternatively, if you specify (`"yarn.label.expression": ""`) for `HBASE_REGIONSERVER` then the containers will only be allocated on nodes with no labels.

```
{ "schema": "http://example.org/specification/v2.0.0",
  "metadata": {
  },
  "global": {
  },
  "components": {
    "HBASE_MASTER": {
      "yarn.role.priority": "1",
      "yarn.component.instances": "1",
      "yarn.label.expression": "hbase1_master"
    },
    "HBASE_REGIONSERVER": {
      "yarn.role.priority": "1",
      "yarn.component.instances": "1",
    },
    "slider-appmaster": {
      "yarn.label.expression": "hbase1"
    }
  }
}
```

Specifically, for the above example you would need to:

- Create two node labels, `"hbase1"` and `"hbase1_master"` (using `yarn radmin` commands)
- Assign the labels to nodes (using `yarn radmin` commands)
- Create a queue by defining it in the `capacity-scheduler.xml` configuration file.
- Allow the queue to access to the labels and ensure that appropriate min/max capacity is assigned.
- Refresh the queues (`yarn radmin -refreshQueues`)
- Create the Slider application against the above queue using parameter `--queue` while creating the application.

#### Retrieving Effective `hbase-site.xml`

Once HBase is running on Slider, you can use the following command to retrieve `hbase-site.xml` so that your client can connect to the cluster:

```
slider registry --getconf hbase-site --name <cluster name> --format xml --dest <path to local hbase-site.xml> --filesystem <hdfs namenode> --manager <resource manager>
```

Note that the `hbase.tmp.dir` in the returned file may be inside the YARN local directory for the container (which is local to the host where the container is running).

For example:

```
<property>
<name>hbase.tmp.dir</name> <value>/grid/0/hadoop/yarn/
local/usercache/test/appcache/application_1413942326640_0001/
container_1413942326640_0001_01_000005/work/app/tmp</value>
<source/>
</property>
```

If the client does not have access to this directory, changing the `hbase.tmp.dir` to a directory writable to the user would solve the permission issue.

**Retrieving REST gateway for Slider HBase.** You can retrieve quicklinks for Slider HBase first. The "org.apache.slider.hbase.rest" entry would show hostname and port for REST gateway.

**Retrieving thrift gateway for Slider HBase** You can retrieve quicklinks for Slider HBase first. The "org.apache.slider.hbase.thrift" entry would show hostname and port for thrift gateway.

**Retrieving thrift2 gateway for Slider HBase** You can retrieve quicklinks for Slider HBase first. The "org.apache.slider.hbase.thrift2" entry would show hostname and port for thrift2 gateway.

### Workaround for HBase Client Issue

After you create an HBase application instance in Slider, you can use the `slider registry` command to retrieve the `hbase-site.xml` file:

```
slider registry --name hbase1 --getconf hbase-site --format xml --out hbase-site.xml
```

The path of the `hbase.tmp.dir` property in the returned file will be inside the YARN local directory for the container (which is local to the host where the container is running):

```
<property>
<name>hbase.tmp.dir</name> <value>/grid/0/hadoop/yarn/
local/usercache/test/appcache/application_1413942326640_0001/
container_1413942326640_0001_01_000005/work/app/tmp</value>
<source/>
</property>
```

The HBase client (specifically the HBase shell) expects to see a directory named "jars" in this directory. If it is not there the HBase client attempts to create it, resulting in a failure to perform shell operations:

```
[test@ip-10-0-0-66 hbase]$ hbase --config ./conf shell
...
hbase(main):001:0> status 'simple'
...
ERROR: Failed to create local dir /grid/0/hadoop/yarn/local/
usercache/test/appcache/application_1413942326640_0001/
container_1413942326640_0001_01_000005/work/app/tmp/local/jars,
DynamicClassLoader failed to init
```

**Workaround:** Change the `hbase.tmp.dir` to a directory that is writable for the user running "hbase shell" or to a directory which already has the "jars" directory.

## 6.7. Running Accumulo on YARN via Slider

Running Accumulo on YARN via Slider offers the following advantages:

- Easier installation and start-up.
- You can run multiple instances of Accumulo on one Hadoop cluster.
- Process management (start/stop) is much easier with Slider.
- You can run different versions of Accumulo on the same Hadoop cluster.
- You can take advantage of YARN features such as container restart and allocation flexibility.

### 6.7.1. Downloading and Installing the Accumulo Application Package

**To install the Accumulo Application Package:**

1. Make a working directory for the Accumulo-on-Slider application package:

```
mkdir -p /usr/work/app-packages/accumulo
```

2. Download the Accumulo-on-Slider application package for your operating system to the `/usr/work/app-packages/accumulo` directory. For example, use the following command to download the centos6 version:

```
cd /usr/work/app-packages/accumulo
wget http://public-repo-1.hortonworks.com/HDP/centos6/2.x/updates/2.4.2.0/
slider-app-packages/accumulo/slider-accumulo-app-package-1.7.0.2.4.2.0-258.
zip
```

For a complete list of available operating system application packages, see [The Slider Application Package](#).

3. Use the following command format to install the application package on YARN:

```
su <user>
/usr/hdp/current/slider-client/bin/./slider install-package --name ACCUMULO
--package <package path>
```

Where `<user>` is the user who will create the Accumulo application instance.

For example, if user "hw\_qa" downloaded the Accumulo package to the `/usr/work/app-packages/accumulo` folder:

```
su hw_qa
/usr/hdp/current/slider-client/bin/./slider install-package --name ACCUMULO
--package /usr/work/app-packages/accumulo/sslider-app-packages/accumulo/
slider-accumulo-app-package-1.7.0.2.4.2.0-258.zip
```

Note that the `--name` (in this case, "ACCUMULO") should match the value of the `<name>` element in the package `metainfo.xml` file, and that the install destination in HDFS is in the user's home directory under `./slider/package/ACCUMULO/*.zip`



### Note

Accumulo on Slider is not supported on Windows, as Accumulo is not currently supported on Windows.

## 6.7.2. Configuring Accumulo on YARN

### Accessing the Accumulo Configuration Files

The Accumulo application package includes default application and resource specification files. The package includes both non-secure (`appConfig-default.json`) and secure (`appConfig-secured-default.json`) versions of the application specification. You can save these files as a another name, and then edit the files to customize the Accumulo configuration.

You can use the `unzip` command to extract the Accumulo application and resource specification files from the Accumulo-on-Slider application package. For example, you would use the following command to extract the files from the Accumulo application package in the `/usr/work/app-packages/accumulo` directory:

```
unzip /usr/work/app-packages/accumulo/slider-app-packages/accumulo/slider-
accumulo-app-package-1.7.0.2.4.2.0-258.zip appConfig-default.json -d /usr/
work/app-packages/accumulo
unzip /usr/work/app-packages/accumulo/slider-app-packages/accumulo/slider-
accumulo-app-package-1.7.0.2.4.2.0-258.zip resources-default.json -d /usr/
work/app-packages/accumulo
```

You can use the following commands to copy and rename the default Storm application and resource specification files in the `/usr/work/app-packages/accumulo` directory:

```
cp /usr/work/app-packages/accumulo/appConfig-default.json /usr/work/app-
packages/accumulo/appConfig.json
cp /usr/work/app-packages/accumulo/resources-default.json /usr/work/app-
packages/accumulo/resources.json
```

### Application Configuration for Accumulo on YARN

The following is an example of an `appConfig.json` file for Accumulo on YARN via Slider. The basic properties to adjust for your system are the heap size, the Accumulo memory properties, and the location of `JAVA_HOME`. The directories and classpaths are configured

properly for HDP in the default `appConfig-default.json` file, but you must set the `JAVA_HOME` value in the "global" section of the `appConfig.json` file to match your system `JAVA_HOME` setting.

```
{
  "schema": "http://example.org/specification/v2.0.0",
  "metadata": {
  },
  "global": { "application.def": ".slider/package/ACCUMULO/slider-accumulo-
app-package-1.7.0.2.4.2.0-258.zip",
  "java_home": "/usr/hadoop-jdk1.6.0_31",
  "site.global.app_root": "${AGENT_WORK_ROOT}/app/install/accumulo-1.7.0.2.
4.2.0-258",
  "site.global.app_user": "${USER}",
  "site.global.user_group": "hadoop",

  "site.accumulo-env.java_home": "${JAVA_HOME}",
  "site.accumulo-env.tserver_heapsize": "256m",
  "site.accumulo-env.master_heapsize": "128m",
  "site.accumulo-env.monitor_heapsize": "64m",
  "site.accumulo-env.gc_heapsize": "64m",
  "site.accumulo-env.other_heapsize": "128m",
  "site.accumulo-env.hadoop_prefix": "/usr/hdp/current/hadoop-client",
  "site.accumulo-env.hadoop_conf_dir": "/etc/hadoop/conf",
  "site.accumulo-env.zookeeper_home": "${zk.dir}",

  "site.client.instance.name": "${USER}-${CLUSTER_NAME}",

  "site.global.accumulo_root_password": "NOT_USED",
  "site.global.ssl_cert_dir": "ssl",
  "site.global.monitor_protocol": "http",

  "site.accumulo-site.instance.volumes": "${DEFAULT_DATA_DIR}/data",
  "site.accumulo-site.instance.zookeeper.host": "${ZK_HOST}",
  "site.accumulo-site.instance.security.authenticator": "org.apache.slider.
accumulo.CustomAuthenticator",

  "site.accumulo-site.general.security.credential.provider.paths": "jceks://
hdfs/user/${USER}/accumulo-${CLUSTER_NAME}.jceks",
  "site.accumulo-site.instance.rpc.ssl.enabled": "false",
  "site.accumulo-site.instance.rpc.ssl.clientAuth": "false",
  "site.accumulo-site.general.kerberos.keytab": "",
  "site.accumulo-site.general.kerberos.principal": "",

  "site.accumulo-site.tserver.memory.maps.native.enabled": "false",
  "site.accumulo-site.tserver.memory.maps.max": "80M",
  "site.accumulo-site.tserver.cache.data.size": "7M",
  "site.accumulo-site.tserver.cache.index.size": "20M",
  "site.accumulo-site.tserver.sort.buffer.size": "50M",
  "site.accumulo-site.tserver.walog.max.size": "40M",

  "site.accumulo-site.trace.user": "root",

  "site.accumulo-site.master.port.client": "0",
  "site.accumulo-site.trace.port.client": "0",
  "site.accumulo-site.tserver.port.client": "0",
  "site.accumulo-site.gc.port.client": "0",
  "site.accumulo-site.monitor.port.client": "${ACCUMULO_MONITOR.
ALLOCATED_PORT}",
```

```

"site.accumulo-site.monitor.port.log4j": "0",
"site.accumulo-site.master.replication.coordinator.port": "0",
"site.accumulo-site.replication.receipt.service.port": "0",

"site.accumulo-site.general.classpaths": "$ACCUMULO_HOME/lib/accumulo-
server.jar,\n$ACCUMULO_HOME/lib/accumulo-core.jar,\n$ACCUMULO_HOME/lib/
accumulo-start.jar,\n$ACCUMULO_HOME/lib/accumulo-fate.jar,\n$ACCUMULO_HOME/
lib/accumulo-proxy.jar,\n$ACCUMULO_HOME/lib/[^].*.jar,\n$ZOOKEEPER_HOME/
zookeeper[^].*.jar,\n$HADOOP_CONF_DIR,\n$HADOOP_PREFIX/[^].*.jar,\n
$HADOOP_PREFIX/lib/[^].*.jar,\n$HADOOP_PREFIX/share/hadoop/common/*.jar,\n
$HADOOP_PREFIX/share/hadoop/common/lib/*.jar,\n$HADOOP_PREFIX/share/hadoop/
hdfs/*.jar,\n$HADOOP_PREFIX/share/hadoop/mapreduce/*.jar,\n$HADOOP_PREFIX/
share/hadoop/yarn/*.jar,\n/usr/hdp/current/hadoop-client/*.jar,\n/usr/hdp/
current/hadoop-client/lib/*.jar,\n/usr/hdp/current/hadoop-hdfs-client/*.jar,
\n/usr/hdp/current/hadoop-mapreduce-client/*.jar,\n/usr/hdp/current/hadoop-
yarn-client/*.jar,"
},
"credentials": {
  "jceks://hdfs/user/${USER}/accumulo-${CLUSTER_NAME}.jceks": ["root.
initial.password", "instance.secret", "trace.token.property.password"]
},
"components": {
  "slider-appmaster": {
    "jvm.heapspace": "256M",
    "slider.am.keytab.local.path": "",
    "slider.keytab.principal.name": ""
  }
}
}

```

## Resource Components in Accumulo on YARN

You can specify the following components (also referred to as "roles") when deploying Accumulo on YARN via Slider:

- ACCUMULO\_MASTER # Accumulo master process.
- ACCUMULO\_TSERVER # Accumulo tablet server process.
- ACCUMULO\_MONITOR # Accumulo monitor web UI
- ACCUMULO\_GC # Accumulo garbage collector process
- ACCUMULO\_TRACER # Accumulo trace collector process

The following is an example of an Accumulo `resources.json` file with these roles configured:

```

{
  "schema": "http://example.org/specification/v2.0.0",
  "metadata": {
  },
  "global": {
    "yarn.log.include.patterns": "",
    "yarn.log.exclude.patterns": ""
  },
  "components": {

```



```
"ACCUMULO_MASTER": {
  "yarn.role.priority": "1",
  "yarn.component.instances": "1",
  "yarn.memory": "256"
},
"slider-appmaster": {
},
"ACCUMULO_TSERVER": {
  "yarn.role.priority": "2",
  "yarn.component.instances": "1",
  "yarn.memory": "512"
},
"ACCUMULO_MONITOR": {
  "yarn.role.priority": "3",
  "yarn.component.instances": "1",
  "yarn.memory": "128"
},
"ACCUMULO_GC": {
  "yarn.role.priority": "4",
  "yarn.component.instances": "1",
  "yarn.memory": "128"
},
"ACCUMULO_TRACER": {
  "yarn.role.priority": "5",
  "yarn.component.instances": "1",
  "yarn.memory": "256"
}
}
```

The memory and number of instances of each component should be adjusted for your system and desired application instance size. You typically only need to request one instance of the `ACCUMULO_MONITOR`, `ACCUMULO_GC`, and `ACCUMULO_TRACER` processes. For HA (High Availability) purposes, you will generally want two instances of `ACCUMULO_MASTER`, and enough instances of `ACCUMULO_TSERVER` to support your application.

### 6.7.3. Configuring Accumulo on YARN on Secure Clusters

As previously mentioned, the Accumulo-on-Slider application package includes both non-secure (`appConfig-default.json`) and secure (`appConfig-secured-default.json`) versions of the application specification. On secure clusters, you should use the secure version of the application specification.

To configure Accumulo for Kerberos, the following properties should be changed in the `appConfig.json` file to specify a keytab and principal for Accumulo processes to use. You must generate the keytabs on all the hosts and provide their location to Accumulo in the keytab property. If the keytab is not headless, the recommended form for the principal is `accumulo/_HOST@<realm>`, with the realm for your system. The Slider Application Master also needs a keytab and a principal, which can be (but does not need to be) the same one used for the Accumulo processes.

```
"global": {
  "site.accumulo-site.general.kerberos.keytab": "",
  "site.accumulo-site.general.kerberos.principal": "",
},
"components": {
  "slider-appmaster": {
    "slider.am.keytab.local.path": "",
    "slider.keytab.principal.name": ""
  }
}
```

should be changed to:

```
"global": {
  "site.accumulo-site.general.kerberos.keytab": <keytab file abs path>,
  "site.accumulo-site.general.kerberos.principal": <principal name>,
},
"components": {
  "slider-appmaster": {
    "slider.am.keytab.local.path": <keytab file abs path>,
    "slider.keytab.principal.name": <principal name>
  }
}
```



### Note

For more information on configuring Accumulo-on-Slider on secure clusters, including information about keytab-associated properties and the available keytab distribution options, see [Apache Slider Security](#).

## 6.7.4. Launching an Accumulo Application Instance

### 1. Initialize Accumulo Passwords

Before starting an Accumulo cluster on YARN, you must initialize the passwords needed by Accumulo. These passwords are specified in the `credentials` section of the `appConfig.json` file. By default they are the `root.initial.password` (the initial password for the root user, which can be changed later using the Accumulo API), the `instance.secret` (a shared secret needed by Accumulo server processes), and the `trace.token.property.password` (the password for the user that collects traces, which is the root user in the default configuration — so it should match the `root.initial.password`).

These passwords can be created using the following commands:

```
/usr/hdp/current/hadoop-client/bin/hadoop credential create root.initial.password -provider jceks://hdfs/user/<user>/accumulo-<accumulo_cluster_name>.jceks -v <root password>
/usr/hdp/current/hadoop-client/bin/hadoop credential create instance.secret -provider jceks://hdfs/user/<user>/accumulo-<accumulo_cluster_name>.jceks -v <instance secret>
/usr/hdp/current/hadoop-client/bin/hadoop credential create trace.token.property.password -provider jceks://hdfs/user/<user>/accumulo-<accumulo_cluster_name>.jceks -v <root password again>
```

Where `<user>` is the user who will create the Accumulo application instance and `<accumulo_cluster_name>` is the name of the Accumulo cluster that will be used in the Slider create command.

For example, using the user "hw\_qa" and the Accumulo cluster name "accumulo1":

```
/usr/hdp/current/hadoop-client/bin/hadoop credential create root.initial.  
password -provider jceks://hdfs/user/hw_qa/accumulo-accumulo1.jceks -v  
testRootPassword1  
/usr/hdp/current/hadoop-client/bin/hadoop credential create instance.secret -  
provider jceks://hdfs/user/hw_qa/accumulo-accumulo1.jceks -v instanceSecret1  
/usr/hdp/current/hadoop-client/bin/hadoop credential create trace.token.  
property.password -provider jceks://hdfs/user/hw_qa/accumulo-accumulo1.jceks -  
v testRootPassword1
```

## 2. Launch the Accumulo Application Instance

Use the following command format to launch Accumulo:

```
su <user>  
/usr/hdp/current/slider-client/bin/./slider create <accumulo_cluster_name> --  
template appConfig.json --resources resources.json
```

Where `<user>` and `<accumulo_cluster_name>` are the user and cluster name that were used when the Accumulo passwords were created.

For example:

```
su hw_qa  
/usr/hdp/current/slider-client/bin/./slider create accumulo1 --template /usr/  
work/app-packages/accumulo/appConfig.json --resources /usr/work/app-packages/  
accumulo/resources.json
```



### Note

The cluster name may not include uppercase characters.

You can use the Slider CLI `status` command to verify the application launch:

```
/usr/hdp/current/slider-client/bin/./slider status <accumulo_cluster_name>
```

You can also use the Slider CLI `list` command to verify the application launch:

```
/usr/hdp/current/slider-client/bin/./slider list <accumulo_cluster_name>
```

The Accumulo instance name will have the format `<user name>-<accumulo_cluster_name>`.

The successful launch of the Accumulo cluster can also be verified via the YARN Resource Manager Web UI. This UI is usually accessible via a Web browser at port 8088 of the Resource Manager Host:

**hadoop** All Applications Logged in as: gopher

Cluster Metrics

Apps Submitted	Apps Pending	Apps Running	Apps Completed	Containers Running	Memory Used	Memory Total	Memory Reserved	V-Cores Used	V-Cores Total	V-Cores Reserved	Active Nodes	Decommissioned Nodes	Lost Nodes	Unhealthy Nodes	Rebooted Nodes
7	0	3	4	15	3.75 GB	4.13 GB	0 B	15	24	0	3	0	0	0	0

Show 20 1 entries

ID	User	Name	Application Type	Queue	StartTime	FinishTime	State	FinalStatus	Progress	Tracking UI
application_1412546426630_0007	hdfs	accumulo1	org-apache-slider	default	Wed, 08 Oct 2014 19:43:27 GMT	N/A	RUNNING	UNDEFINED	<div style="width: 100%;"></div>	ApplicationMaster
application_1412546426630_0006	hdfs	storm1	org-apache-slider	default	Wed, 08 Oct 2014 14:56:50 GMT	N/A	RUNNING	UNDEFINED	<div style="width: 100%;"></div>	ApplicationMaster
application_1412546426630_0005	hdfs	hb1	org-apache-slider	default	Tue, 07 Oct 2014 20:27:59 GMT	N/A	RUNNING	UNDEFINED	<div style="width: 100%;"></div>	ApplicationMaster
application_1412546426630_0004	hadooppie	PigLatinJobTest.hadooppie.080514.29966.pig	MAPREDUCE	default	Sun, 05 Oct 2014 22:10:12 GMT	Sun, 05 Oct 2014 22:10:27 GMT	FINISHED	SUCCEEDED	<div style="width: 100%;"></div>	History
application_1412546426630_0003	hadooppie	TempletonControllerJob	MAPREDUCE	joblauncher	Sun, 05 Oct 2014 22:08:44 GMT	Sun, 05 Oct 2014 22:10:47 GMT	FINISHED	SUCCEEDED	<div style="width: 100%;"></div>	History
application_1412546426630_0002	hadooppie	PigLatin.id.pig	MAPREDUCE	default	Sun, 05 Oct 2014 22:02:31 GMT	Sun, 05 Oct 2014 22:02:46 GMT	FINISHED	SUCCEEDED	<div style="width: 100%;"></div>	History
application_1412546426630_0001	hadooppie	word count	MAPREDUCE	default	Sun, 05 Oct 2014 22:01:02 GMT	Sun, 05 Oct 2014 22:01:51 GMT	FINISHED	SUCCEEDED	<div style="width: 100%;"></div>	History

Showing 1 to 7 of 7 entries First Previous 1 Next Last

The specific information for the running Accumulo cluster is accessible via the "ApplicationMaster" link that can be seen in the far right column of the row associated with the running application (probably the top row):

**hadoop** Slider App Master Logged in as: gopher

Application: 'accumulo7'

- Total number of containers for application: 5
- Application created: 19 Nov 2014 14:36:14 GMT
- Application last fixed: N/A
- Application running since: 19 Nov 2014 14:36:14 GMT
- Application HDFS storage path: hdfs://node-1.example.com:8020/user/hw\_qa/slider/cluster/accumulo7/database
- Application configuration path: hdfs://node-1.example.com:8020/user/hw\_qa/slider/cluster/accumulo7/snapshot

agentproviderservice specific information

- http://http://node-3.example.com:33398
- classpath.org.apache.slider.management http://node-3.example.com:33398/ws/v1/slider/mgmt
- classpath.org.apache.slider.publisher http://node-3.example.com:33398/ws/v1/slider/publisher
- classpath.org.apache.slider.registry http://node-3.example.com:33398/ws/v1/slider/registry
- classpath.org.apache.slider.publisher.configurations http://node-3.example.com:33398/ws/v1/slider/publisher/slider
- classpath.org.apache.slider.publisher.exports http://node-3.example.com:33398/ws/v1/slider/publisher/exports
- ACCUMULO\_MASTER Host(s)/Container(s): [node-2.example.com/container\_1416327763344\_0008\_01\_000002]
- ACCUMULO\_TRACER Host(s)/Container(s): [node-1.example.com/container\_1416327763344\_0008\_01\_000006]
- ACCUMULO\_MONITOR Host(s)/Container(s): [node-3.example.com/container\_1416327763344\_0008\_01\_000004]
- ACCUMULO\_GC Host(s)/Container(s): [node-2.example.com/container\_1416327763344\_0008\_01\_000005]
- slider-appmaster Host(s)/Container(s): [node-3.example.com/container\_1416327763344\_0008\_01\_000001]
- ACCUMULO\_TSERVER Host(s)/Container(s): [node-1.example.com/container\_1416327763344\_0008\_01\_000003]

Component Instances

Component	Desired	Actual	Outstanding Requests	Failed	Failed to start
ACCUMULO_GC	1	1	0	0	0
ACCUMULO_MASTER	1	1	0	0	0
ACCUMULO_MONITOR	1	1	0	0	0
ACCUMULO_TRACER	1	1	0	0	0
ACCUMULO_TSERVER	1	1	0	0	0
slider-appmaster	1	1	0	0	0

### Accessing the Accumulo Monitor

On the Slider App Master page, one of the links should end with publisher/slider, for example:

`http://node-1.example.com:52413/ws/v1/slider/publisher/slider`

Add "quicklinks" to that URL, for example:

`http://node-1.example.com:52413/ws/v1/slider/publisher/slider/quicklinks`

That page will list some .json code. The value of the "org.apache.slider.monitor" key is the URL of the Accumulo monitor page. If you go to the quicklinks page right after the application instance is created, it will not be ready right away, because the monitor has to come up and register itself. But if you keep reloading the quicklinks URL, it will come up eventually (if the cluster is healthy).

## 6.7.5. Client Connections to Accumulo and Retrieving Effective `accumulo-site.xml`

The most efficient method for obtaining a client for Accumulo would be to install the Accumulo .rpm (`yum install accumulo`) and the Accumulo configuration .rpm (`yum install accumulo-conf-standalone`). Then copy all of the Accumulo default configuration files from the `/usr/hdp/<version_number>/etc/accumulo/conf.dist/templates/` directory into your desired Accumulo configuration directory (e.g. `/etc/accumulo/conf`).

The next step is to obtain some configuration files from the registry for your Slider Accumulo cluster to enable your client to connect to the instance of Accumulo you created. Once Slider Accumulo is running, you can use the following commands to retrieve the necessary configurations from the registry into the Accumulo `conf` directory you are setting up.

```
slider registry --getconf accumulo-site --name <cluster name> --format xml --dest <accumulo_conf_dir>/accumulo-site.xml
slider registry --getconf client --name <cluster name> --format properties --dest <accumulo_conf_dir>/client.conf
slider registry --getconf accumulo-env --name <cluster name> --format json --dest accumulo-env.json
python -c "import json; file = open('accumulo-env.json'); content = json.load(file); file.close(); print content['content']" > <accumulo_conf_dir>/accumulo-env.sh
```

You should now be able to connect to Accumulo with the following command:

```
accumulo shell -u root
```

If there are multiple Slider Accumulo clusters running, you can connect to any of them from the same client installation. You still must download the configuration files from the registry for one running cluster, but you only need to do that once, and can then connect to other clusters with the following command:

```
accumulo shell -zh <zookeeper host(s)> -zi <instance name> -u root
```

Remember that the Accumulo instance name will be `<user name>-<slider cluster name>` if you are using the default setting in the `appConfig.json` file (which is strongly recommended).

## 6.7.6. Deployment Considerations

### Memory Considerations for Running One Component on a Node

You can adjust the amount of memory given to a component to achieve mutual exclusion of components, depending upon the NodeManager configuration on each node. Typically all nodes have the same value independent of the actual memory.

Assuming the memory capacity for each NodeManager is known (`yarn.nodemanager.resource.memory-mb`), you can configure the component to ask for 51% (basically more than half) of the maximum capacity. You also need to ensure that the maximum possible memory allocation (`yarn.scheduler.maximum-allocation-mb`) allows that value.

For example, if `yarn.nodemanager.resource.memory-mb = yarn.scheduler.maximum-allocation-mb = 2048` Set `yarn.memory = 1280` for the `ACCUMULO_MASTER` and `ACCUMULO_TSERVER` properties in the `resources.json` file.

Then in the `appConfig.json` file, set the `ACCUMULO_MASTER` and `ACCUMULO_TSERVER` heap sizes (including the `ACCUMULO_TSERVER` off-heap memory properties, if native maps are enabled) to be 256 MB less than the memory requested for the YARN containers to allow for the agent memory consumption – the agent should not use more than 100 MB, but you can assume that it consumes ~256 MB. So you can set the `ACCUMULO_MASTER` and `ACCUMULO_TSERVER` variables for memory limit to fit within 1024 MB.

### Log Aggregation

Log aggregation is specified in the `yarn-site.xml` file. The `yarn.log-aggregation-enable` property enables log aggregation for running applications. If a monitoring interval is also set, it will aggregate logs while an application is running, with the specified interval. The minimum interval is 3600 seconds.

```
<property>
  <name>yarn.log-aggregation-enable</name>
  <value>true</value>
</property>

<property>
  <name>yarn.nodemanager.log-aggregation.roll-monitoring-interval-seconds</name>
  <value>3600</value>
</property>
```

Log aggregation is specified in the global section of `resources.json`:

```
"global": {
  "yarn.log.include.patterns": "",
  "yarn.log.exclude.patterns": ""
},
```

If `yarn.log.include.patterns` is empty, all container logs are included. You can specify the name(s) of log files (for example, `agent.log`) that you do not want to aggregate using `yarn.log.exclude.patterns`.

The aggregated logs are stored in the HDFS `/app-logs/` directory. The following command can be used to retrieve the logs:

```
yarn logs -applicationId <app_id>
```

### Reserving Nodes for Accumulo

You can use YARN node labels to reserve cluster nodes for applications and their components. You could use node labels to reserve cluster nodes for Accumulo to ensure

that `ACCUMULO_MASTER` and `ACCUMULO_TSERVER` provide a consistent performance level.

Node labels are specified with the `yarn.label.expression` property. If no label is specified, only non-labeled nodes are used when allocating containers for component instances.

A brief summary is that you could label particular YARN nodes for Accumulo, say with labels "accumulo1" and "accumulo1\_master", and create a separate queue for assigning containers to these nodes. To use these labeled nodes, you would add `yarn.label.expression` parameters to the Accumulo components in your `resources.json` file (including the `slider-appmaster`), e.g. `"yarn.label.expression": "accumulo1_master"`. When you run the `slider create` command for your Accumulo cluster, you would add the parameter `"--queue <queue_name>"`.

### Configuring Accumulo for SSL

Accumulo can be configured to use SSL (Secure Sockets Layer) for its internal RPC communications, and its monitor web UI can also be configured to use SSL. The Slider Accumulo application package is set up to use the same SSL certs for both, although the features can be enabled independently.

The SSL certificates must be provided. To distribute the certificates in HDFS, upload them to the directory specified in `site.global.ssl_cert_dir` (by default, `/user/<user name>/ssl`). There should be a `truststore.jks` file and a `.jks` file for each host named `<hostname>.jks`. You must add the passwords for the certificates to the credential provider by adding them to the list in the "credentials" section of the `appConfig.json` file as shown below. To turn on SSL, set the Accumulo SSL properties below to `true`. To turn on https for the monitor UI, change the `monitor_protocol` to `https`.

The properties are as follows:

```
"global": {
  "site.global.ssl_cert_dir": "ssl",
  "site.global.monitor_protocol": "http",
  "site.accumulo-site.instance.rpc.ssl.enabled": "false",
  "site.accumulo-site.instance.rpc.ssl.clientAuth": "false",
},
"credentials": {
  "jceks://hdfs/user/${USER}/accumulo-${CLUSTER_NAME}.jceks": ["root.
initial.password", "instance.secret", "trace.token.property.password"]
},
```

Change these to:

```
"global": {
  "site.global.ssl_cert_dir": "ssl",
  "site.global.monitor_protocol": "https",
  "site.accumulo-site.instance.rpc.ssl.enabled": "true",
  "site.accumulo-site.instance.rpc.ssl.clientAuth": "true",
},
"credentials": {
  "jceks://hdfs/user/${USER}/accumulo-${CLUSTER_NAME}.jceks": ["root.
initial.password", "instance.secret", "trace.token.property.password", "rpc.
javax.net.ssl.keyStorePassword", "rpc.javax.net.ssl.trustStorePassword",
"monitor.ssl.keyStorePassword", "monitor.ssl.trustStorePassword"]
},
}
```

If you would like to distribute the certs yourself rather than through HDFS, simply set the following properties to the locations of the `.jks` files in the local file system (the keystore file should have the same name on all hosts for this configuration).

```
"global": {
  "site.accumulo-site.rpc.javax.net.ssl.keyStore": "<keystore file>",
  "site.accumulo-site.rpc.javax.net.ssl.trustStore": "<truststore file>",
},
}
```

If `clientAuth` is enabled, you must have a `client.conf` file in your client Accumulo conf directory, or a `.accumulo/config` file in your home directory. Your `keystore.jks` and `truststore.jks` SSL certs for the client can be placed in an `ssl` directory in the Accumulo conf directory (or their locations can be specified by also specifying the `rpc.javax.net.ssl.keyStore` and `rpc.javax.net.ssl.trustStore` properties). If the client user is the same user that created the Accumulo cluster, it can use the same credential provider as the app, `jceks://hdfs/user/<user name>/accumulo-<cluster name>.jceks`, but otherwise the client user will have to create their own credential provider using the `hadoop credential` command. The user must set the credential provider in their `client.conf` file, and make sure the specified credential provider contains the `rpc.javax.net.ssl.keyStorePassword` and `rpc.javax.net.ssl.trustStorePassword`.

A `client.conf` file for the Accumulo instance can be retrieved with the following command:

```
slider registry --getconf client --name <cluster name> --format properties --
dest <path to local client.conf>
```

## Building Accumulo Native Libraries

Accumulo performs better when it uses a native in-memory map for newly written data. To build the native libraries for your system, perform the following steps to add them to your application package. Then set the `"site.accumulo-site.tserver.memory.maps.native.enabled"` property to `true` in your `appConfig.json` file, and be sure to adjust the `ACCUMULO_TSERVER` `heapsize` parameter so that it no longer includes the `tserver.memory.maps.max` memory.

```
unzip <app package name>.zip package/files/accumulo*gz
cd package/files/
gunzip accumulo-<version>-bin.tar.gz
tar xvf accumulo-<version>-bin.tar
accumulo-1.6.0/bin/build_native_library.sh
```



```
tar uvf accumulo-<version>-bin.tar accumulo-<version>
rm -rf accumulo-<version>
gzip accumulo-<version>-bin.tar
cd ../../
zip <app package name>.zip -r package
rm -rf package
```

## 7. Running Multiple MapReduce Versions Using the YARN Distributed Cache

Beginning in HDP 2.2, multiple versions of the MapReduce framework can be deployed using the YARN Distributed Cache. By setting the appropriate configuration properties, you can run jobs using a different version of the MapReduce framework than the one currently installed on the cluster.

Distributed cache ensures that the MapReduce job framework version is consistent throughout the entire job lifecycle. This enables you to maintain consistent results from MapReduce jobs during a rolling upgrade of the cluster. Without using Distributed Cache, a MapReduce job might start with one framework version, but finish with the new (upgrade) version, which could lead to unpredictable results.

YARN Distributed Cache enables you to efficiently distribute large read-only files (text files, archives, .jar files, etc) for use by YARN applications. Applications use URLs (hdfs://) to specify the files to be cached, and the Distributed Cache framework copies the necessary files to the applicable nodes before any tasks for the job are executed. Its efficiency stems from the fact that the files are copied only once per job, and archives are extracted after they are copied to the applicable nodes. Note that Distributed Cache assumes that the files to be cached (and specified via hdfs:// URLs) are already present on the HDFS file system and are accessible by every node in the cluster.

### Configuring MapReduce for the YARN Distributed Cache

- Copy the tarball that contains the version of MapReduce you would like to use into an HDFS directory that applications can access.

```
$HADOOP_HOME/bin/hdfs dfs -put mapreduce.tar.gz /mapred/framework/
```

- In the `mapred-site.xml` file, set the value of the `mapreduce.application.framework.path` property URL to point to the archive file you just uploaded. The URL allows you to create an alias for the archive if a URL fragment identifier is specified. In the following example, `${hdp.version}` should be replaced with the applicable HDP version, and `mr-framework` is specified as the alias:

```
<property>
  <name>mapreduce.application.framework.path</name>
  <value>hdfs://hdp/apps/${hdp.version}/mapreduce/mapreduce.tar.gz#mr-
framework</value>
</property>
```

- In the `mapred-site.xml` file, the default value of the `mapreduce.application.classpath` uses the `${hdp.version}` environment variable to reference the currently installed version of HDP:

```
<property>
  <name>mapreduce.application.classpath</name>
  <value>${PWD}/mr-framework/hadoop/share/hadoop/mapreduce/*:${PWD}/mr-framework/
hadoop/share/hadoop/mapreduce/lib/*:${PWD}/mr-framework/hadoop/share/hadoop/
common/*:${PWD}/mr-framework/hadoop/share/hadoop/common/lib/*:${PWD}/mr-
framework/hadoop/share/hadoop/yarn/*:${PWD}/mr-framework/hadoop/share/hadoop/
yarn/lib/*:${PWD}/mr-framework/hadoop/share/hadoop/hdfs/*:${PWD}/mr-framework/
```

```
hadoop/share/hadoop/hdfs/lib/*:/usr/hdp/${hdp.version}/hadoop/lib/hadoop-
lzo-0.6.0.${hdp.version}.jar</value>
</property>
```

Change the value of the `mapreduce.application.classpath` property to reference the applicable version of the MapReduce framework .jar files. In this case we need to replace `${hdp.version}` with the applicable HDP version, which in our example is `2.2.0.0-2041`. Note that in the following example the `mr-framework` alias is used in the path references.

```
<property>
  <name>mapreduce.application.classpath</name>
  <value>${PWD}/mr-framework/hadoop/share/hadoop/mapreduce/*:${PWD}/mr-framework/
hadoop/share/hadoop/mapreduce/lib/*:${PWD}/mr-framework/hadoop/share/hadoop/
common/*:${PWD}/mr-framework/hadoop/share/hadoop/common/lib/*:${PWD}/mr-
framework/hadoop/share/hadoop/yarn/*:${PWD}/mr-framework/hadoop/share/hadoop/
yarn/lib/*:${PWD}/mr-framework/hadoop/share/hadoop/hdfs/*:${PWD}/mr-framework/
hadoop/share/hadoop/hdfs/lib/*:/usr/hdp/2.2.0.0-2041/hadoop/lib/hadoop-
lzo-0.6.0.2.2.0.0-2041.jar</value>
</property>
```

With this configuration in place, MapReduce jobs will run on the version `2.2.0.0-2041` framework referenced in the `mapred-site.xml` file.

You can upload multiple versions of the MapReduce framework to HDFS and create a separate `mapred-site.xml` file to reference each version of the framework. Users can then run jobs against a specific version by referencing the applicable `mapred-site.xml` file. The following example would run a MapReduce job on version 2.1 of the MapReduce framework:

```
hadoop jar share/hadoop/mapreduce/hadoop-mapreduce-examples-*.jar pi -conf
etc/hdp-2.1.0.0/mapred-site.xml 10 10
```

You can use the ApplicationMaster log file to confirm that the job ran on the localized version of MapReduce on the Distributed Cache. For example:

```
2014-06-10 08:19:30,199 INFO [main] org.mortbay.log: Extract jar: file:/
<nm-local-dirs>/filecache/10/hadoop-2.3.0.tar.gz/hadoop-2.3.0/share/
hadoop/yarn/hadoop-yarn-common-2.3.0.jar!/webapps/mapreduce to /tmp/
Jetty_0_0_0_0_42544_mapreduce____.pryk9q/webapp
```

## Limitations

Support for deploying the MapReduce framework via the YARN Distributed Cache currently does not address the job client code used to submit and query jobs. It also does not address the ShuffleHandler code that runs as an auxiliary service within each NodeManager. Therefore, the following limitations apply to MapReduce versions that can be successfully deployed via the Distributed Cache:

- The MapReduce version must be compatible with the job client code used to submit and query jobs. If it is incompatible, the job client must be upgraded separately on any node on which jobs are submitted using the new MapReduce version.
- The MapReduce version must be compatible with the configuration files used by the job client submitting the jobs. If it is incompatible with that configuration (that is, a new property must be set, or an existing property value must be changed), the configuration must be updated before submitting jobs.

- The MapReduce version must be compatible with the ShuffleHandler version running on the cluster nodes. If it is incompatible, the new ShuffleHandler code must be deployed to all nodes in the cluster, and the NodeManagers must be restarted to pick up the new ShuffleHandler code.

### Troubleshooting Tips

- You can use the ApplicationMaster log file to check the version of MapReduce being used by a running job. For example:

```
2014-11-20 08:19:30,199 INFO [main] org.mortbay.log: Extract jar: file:/
<nm-local-dirs>/filecache/{...}/hadoop-2.6.0.tar.gz/hadoop-2.6.0/share/
hadoop/yarn/hadoop-yarn-common-2.6.0.jar!/webapps/mapreduce to /tmp/
Jetty_0_0_0_0_42544_mapreduce____.pryk9q/webapp
```

- If shuffle encryption is enabled, MapReduce jobs may fail with the following exception:

```
2014-10-10 02:17:16,600 WARN [fetcher#1] org.apache.hadoop.mapreduce.
task.reduce.Fetcher: Failed to connect to junping-du-centos6.x-3.cs1cloud.
internal:13562 with 1 map outputs
javax.net.ssl.SSLHandshakeException: sun.security.validator.
ValidatorException: PKIX path building failed: sun.security.provider.
certpath.SunCertPathBuilderException: unable to find valid certification
path to requested target
    at com.sun.net.ssl.internal.ssl.Alerts.getSSLException(Alerts.java:174)
    at com.sun.net.ssl.internal.ssl.SSLSocketImpl.fatal(SSLSocketImpl.
java:1731)
    at com.sun.net.ssl.internal.ssl.Handshaker.fatalSE(Handshaker.java:241)
    at com.sun.net.ssl.internal.ssl.Handshaker.fatalSE(Handshaker.java:235)
    at com.sun.net.ssl.internal.ssl.ClientHandshaker.
serverCertificate(ClientHandshaker.java:1206)
    at com.sun.net.ssl.internal.ssl.ClientHandshaker.
processMessage(ClientHandshaker.java:136)
    at com.sun.net.ssl.internal.ssl.Handshaker.processLoop(Handshaker.java:593)
    at com.sun.net.ssl.internal.ssl.Handshaker.process_record(Handshaker.
java:529)
    at com.sun.net.ssl.internal.ssl.SSLSocketImpl.readRecord(SSLSocketImpl.
java:925)
    at com.sun.net.ssl.internal.ssl.SSLSocketImpl.
performInitialHandshake(SSLSocketImpl.java:1170)
    at com.sun.net.ssl.internal.ssl.SSLSocketImpl.startHandshake(SSLSocketImpl.
java:1197)
    at com.sun.net.ssl.internal.ssl.SSLSocketImpl.startHandshake(SSLSocketImpl.
java:1181)
    at sun.net.www.protocol.https.HttpsClient.afterConnect(HttpsClient.
java:434)
    at sun.net.www.protocol.https.AbstractDelegateHttpsURLConnection.
setNewClient(AbstractDelegateHttpsURLConnection.java:81)
    at sun.net.www.protocol.https.AbstractDelegateHttpsURLConnection.
setNewClient(AbstractDelegateHttpsURLConnection.java:61)
    at sun.net.www.protocol.http.HttpURLConnection.
writeRequests(HttpURLConnection.java:584)
    at sun.net.www.protocol.http.HttpURLConnection.
getInputStream(HttpURLConnection.java:1193)
    at java.net.HttpURLConnection.getResponseCode(HttpURLConnection.java:379)
    at sun.net.www.protocol.https.HttpsURLConnectionImpl.
getResponseCode(HttpsURLConnectionImpl.java:318)
    at org.apache.hadoop.mapreduce.task.reduce.Fetcher.
verifyConnection(Fetcher.java:427)
```

....

To fix this problem, create a sub-directory under `$HADOOP_CONF` (`$HADOOP_HOME/etc/hadoop` by default), and copy the `ssl-client.xml` file to that directory. Add this new directory path (`/etc/hadoop/conf/secure`) to the MapReduce classpath specified in `mapreduce.application.classpath` in the `mapred-site.xml` file.

## 8. Timeline Server

This chapter describes how to configure and run the Timeline Server, which enables you to collect generic and per-framework information about YARN applications.

The Timeline Server maintains historical state and provides metrics visibility for YARN applications, similar to the functionality the Job History Server provides for MapReduce.

The Timeline Server provides the following information:

- **Generic Information about Completed Applications.** Generic information includes application-level data such as queue name, user information, information about application attempts, a list of Containers that were run under each application attempt, and information about each Container. Generic data about completed applications can be accessed using the web UI or via REST APIs.
- **Per-Framework Information for Running and Completed Applications.** Per-framework information is specific to an application or framework. For example, the Hadoop MapReduce framework can include pieces of information such as the number of map tasks, reduce tasks, counters, etc. Application developers can publish this information to the Timeline Server via the TimelineClient (from within a client), the ApplicationMaster, or the application's Containers. This information can then be queried via REST APIs that enable rendering by application/framework-specific UIs.

The Timeline Server is a stand-alone server daemon that is deployed to a cluster node. It may or may not be co-located with the ResourceManager.

### 8.1. Timeline Server 1.5 Overview

In HDP 2.2.9, Timeline Server 1.5 includes changes and fixes that improve scalability. Version 1.5 incorporates changes and improvements to the whole stack; it introduces new client APIs, a new storage architecture (the `EntityGroupFSTimelineStore`), and supports a “plugin” mechanism to work with YARN applications. The most significant change, on the YARN side, is the `EntityGroupFSTimelineStore`. This storage system has a reader part and a writer part. To work with this new version 1.5 architecture, applications can use the newly introduced client APIs to write to version 1.5, and provide a plugin that assists version 1.5 on the reader part. Tez currently provides this support and can work with version 1.5 natively.

- `RollingLevelDbTimelineStore` improves the performance for ATS (Application Timeline Server) operations that need to purge data regarding obsolete entries. Instead of deleting one row at a time, the store is organized as a list of databases so that an entire database can be dropped when all the entries contained within it are obsolete.
- `EntityGroupFSTimelineStore` enables a completely different reader-writer architecture for the ATS. It has two parts, a writer part and a reader part. The writer part involves configuring Tez with the `ATSV15Plugin`. The reader part involves specifying the configurations below. The writer in this instance writes summary information to the ATS and the bulk of the data to the filesystem location specified by the configuration path. Before this store can be used the directory has to be created with the correct permissions.

- Changed properties:
  - **Property:** `yarn.timeline-service.store-class`
    - **Old value:**  
`org.apache.hadoop.yarn.server.timeline.LevelDbTimelineStore`
    - **New value:**  
`org.apache.hadoop.yarn.server.timeline.EntityGroupFSTimelineStore`
  - **Property:** `yarn.timeline-service.leveldb-timeline-store.path`
    - **Old value:** `${yarn.log.dir}/timeline`
    - **New value:** `<Data disk>/ats/leveldb/`
- New properties:
  - `tez.history.logging.service.class`
  - `yarn.timeline-service.entity-group-fs-store.active-dir`
  - `yarn.timeline-service.entity-group-fs-store.cleaner-interval-seconds`
  - `yarn.timeline-service.entity-group-fs-store.done-dir`
  - `yarn.timeline-service.entity-group-fs-store.group-id-plugin-classes`
  - `yarn.timeline-service.entity-group-fs-store.retain-seconds`
  - `yarn.timeline-service.entity-group-fs-store.scan-interval-seconds`
  - `yarn.timeline-service.entity-group-fs-store.summary-store`
  - `yarn.timeline-service.version`

## 8.2. Upgrading Timeline Server 1.0 to 1.5



### Warning

Upgrading from ATS v1 to v1.5 may cause data stored in ATS v1.0 storage to be inaccessible.

The upgrade process is not rolling: applications may lose previous data stored in ATS v1.0 during upgrade.

Before launching ATS v1.5, ensure your system is compliant with the following:

- `yarn.timeline-service.entity-group-fs-store.active-dir` and `yarn.timeline-service.entity-group-fs-store.done-dir` must exist on the

cluster on HDFS. Active-dir should have permission 01777, owned by YARN, group admin-group. Done-dir should have permission 0700, owned by yarn, group admin-group.

- You must **manually** create `yarn.timeline-service.entity-group-fs-store.active-dir` in HDFS **before you start RM and ATS**.
- The Tez cache plugin class must be in the timeline server's classpath.
- `yarn.timeline-service.leveldb-timeline-store.path` must be a path on the local filesystem and must be created with permissions 755. The owner must be the same user that timeline server is running as.

1. To upgrade to ATS 1.5, configure the following:

```
<property>
  <name>yarn.timeline-service.version</name>
  <value>1.5</value>
<description>Timeline service version we're currently using.</description>
</property>

  <property>
  <name>yarn.timeline-service.store-class</name>
  <value>org.apache.hadoop.yarn.server.timeline.EntityGroupFSTimelineStore</
value>
<description>Main storage class for YARN timeline server. </description>
  </property>

  <property>
  <name>yarn.timeline-service.entity-group-fs-store.active-dir</name>
  <value>/ats/active/</value>
<description>DFS path to store active application's timeline data</
description>
  </property>

  <property>
  <name>yarn.timeline-service.entity-group-fs-store.done-dir</name>
  <value>/ats/done/</value>
<description>DFS path to store done application's timeline data</
description>
  </property>
```

2. The following configuration exists in ATS v1.0, ensure it is pointing to the correct directory:

```
<property>
  <name>yarn.timeline-service.leveldb-timeline-store.path</name>
  <value><Data disk>/ats/leveldb/</value>
<description>Local FS path to store the levelDBs that hold the application
summary data</description>
  </property>
```

3. If you have Tez enabled, perform this additional step:



```
<property>
  <name>yarn.timeline-service.entity-group-fs-store.group-id-plugin-
classes</name>
  <value>org.apache.tez.dag.history.logging.ats.TimelineCachePluginImpl</
value>
  <description>Plugins that can translate a timeline entity read request
into a list of timeline cache ids, separated by commas. </description>
</property>
```

#### 4. Configure the `yarn.timeline-service.entity-group-fs-store.summary-store` property:

```
<property>
  <name>yarn.timeline-service.entity-group-fs-store.summary-store</name>
  <description>Summary storage for ATS v1.5</description>
  <value>org.apache.hadoop.yarn.server.timeline.
RollingLevelDBTimelineStore</value>
</property>
```

## 8.3. Configuring the Timeline Server

### Required Properties

Only one property needs to be specified in the `etc/hadoop/conf/yarn-site.xml` file in order to enable the Timeline Server: `yarn.timeline-service.hostname`. The host name of the Timeline Server web application.

Example:

```
<property>
  <description>The hostname of the timeline server web application.</
description>
  <name>yarn.timeline-service.hostname</name>
  <value>0.0.0.0</value>
</property>
```



### Important

If the Timeline Server is running on the same host as the NameNode and is under heavy load, it may be shut down by the system OOM (Out of Memory) killer. Therefore you should consider deploying the Timeline Server on a separate host if you anticipate read-heavy loads.

### Advanced Properties

In addition to the host name, administrators can also configure the ports of the RPC and the web interfaces, as well as the number of RPC handler threads.

- **`yarn.timeline-service.address`**

The default address for the Timeline Server to start the RPC server.

Example:

```
<property>
  <description>This is default address for the timeline server to start the
  RPC server.</description>
  <name>yarn.timeline-service.address</name>
  <value>${yarn.timeline-service.hostname}:10200</value>
</property>
```

- **yarn.timeline-service.webapp.address**

The HTTP address of the Timeline Server web application.

Example:

```
<property>
  <description>The http address of the timeline server web application.</
description>
  <name>yarn.timeline-service.webapp.address</name>
  <value>${yarn.timeline-service.hostname}:8188</value>
</property>
```

- **yarn.timeline-service.webapp.https.address**

The HTTPS address of the Timeline Server web application.

Example:

```
<property>
  <description>The https address of the timeline server web application.</
description>
  <name>yarn.timeline-service.webapp.https.address</name>
  <value>${yarn.timeline-service.hostname}:8190</value>
</property>
```

- **yarn.timeline-service.handler-thread-count**

The handler thread count to serve the client RPC requests.

Example:

```
<property>
  <description>Handler thread count to serve the client RPC requests.</
description>
  <name>yarn.timeline-service.handler-thread-count</name>
  <value>10</value>
</property>
```

## 8.4. Enabling Generic Data Collection

- **yarn.resourcemanager.system-metrics-publisher.enabled**

This property indicates to the ResourceManager, as well as to clients, whether or not the Generic History Service (GHS) is enabled. If the GHS is enabled, the ResourceManager begins recording historical data that the GHS can consume, and clients can redirect to the GHS when applications finish running.

Example:

```
<property>
  <description>Enable or disable the GHS</description>
  <name>yarn.resourcemanager.system-metrics-publisher.enabled</name>
  <value>true</value>
</property>
```

## 8.5. Configuring Per-Framework Data Collection

- **yarn.timeline-service.enabled**

Indicates to clients whether or not the Timeline Server is enabled. If it is enabled, the TimelineClient library used by end-users will post entities and events to the Timeline Server.

Example:

```
<property>
  <description>Enable or disable the Timeline Server.</description>
  <name>yarn.timeline-service.enabled</name>
  <value>true</value>
</property>
```

## 8.6. Configuring the Timeline Server Store

- **yarn.timeline-service.store-class**

The class name for the Timeline store.

Example:

```
<property>
  <description>Store class name for timeline store</description>
  <name>yarn.timeline-service.store-class</name>
  <value>org.apache.hadoop.yarn.server.timeline.LeveldbTimelineStore</value>
</property>
```

- **yarn.timeline-service.leveldb-timeline-store.path**

The store file path and name for the Timeline Server LevelDB store (if the LevelDB store is used).

Example:

```
<property>
  <description>Store file name for leveldb timeline store</description>
  <name>yarn.timeline-service.leveldb-timeline-store.path</name>
  <value>${hadoop.tmp.dir}/yarn/timeline</value>
</property>
```

- **yarn.timeline-service.ttl-enable**

Enable age-off of timeline store data.

Example:

```
<property>
```

```
<description>Enable age off of timeline store data.</description>
<name>yarn.timeline-service.ttl-enable</name>
<value>>true</value>
</property>
```

- **yarn.timeline-service.ttl-ms**

The Time-to-live for timeline store data (in milliseconds).

Example:

```
<property>
  <description>Time to live for timeline store data in milliseconds.</
description>
  <name>yarn.timeline-service.ttl-ms</name>
  <value>604800000</value>
</property>
```

## 8.7. Configuring Timeline Server Security

### Configuring Kerberos Authentication

To configure Kerberos Authentication for the Timeline Server, add the following properties to the `yarn-site.xml` file.

```
<property>
  <name>yarn.timeline-service.http-authentication.type</name>
  <value>kerberos</value>
</property>

<property>
  <name>yarn.timeline-service.http-authentication.kerberos.principal</name>
  <value>HTTP/localhost@EXAMPLE.COM</value>
</property>

<property>
  <name>yarn.timeline-service.http-authentication.kerberos.keytab</name>
  <value>/etc/krb5.keytab</value>
</property>
```

### Configuring Timeline Server Authorization (ACLs)

Timeline Server ACLs are configured in the same way as other YARN ACLs. To configure Timeline Server authorization with ACLs, add the following properties to the `yarn-site.xml` file.

```
<property>
  <name>yarn.acl.enable</name>
  <value>>true</value>
</property>

<property>
  <name>yarn.admin.acl</name>
  <value> </value>
</property>
```

### Configuring Timeline Server SSL

Timeline Server SSL is configured in the same way as other Hadoop components. To configure Timeline Server SSL, add the following properties to the `core-site.xml` file.

```
<property>
  <name>hadoop.ssl.require.client.cert</name>
  <value>>false</value>
</property>

<property>
  <name>hadoop.ssl.hostname.verifier</name>
  <value>DEFAULT</value>
</property>

<property>
  <name>hadoop.ssl.keystores.factory.class</name>
  <value>org.apache.hadoop.security.ssl.FileBasedKeyStoresFactory</value>
</property>

<property>
  <name>hadoop.ssl.server.conf</name>
  <value>ssl-server.xml</value>
</property>

<property>
  <name>hadoop.ssl.client.conf</name>
  <value>ssl-client.xml</value>
</property>
```



### Note

You should also configure YARN SSL settings.

## 8.8. Running the Timeline Server

To start the Timeline Server, run the following command:

```
yarn timelineserver
```

To start the Timeline Server as a daemon, run the following command:

```
sbin/yarn-daemon.sh start timelineserver
```

## 8.9. Accessing Generic Data from the Command-Line

You can use the following commands to access application generic history data from the command-line. Note that these same commands can be used to obtain corresponding information about running applications.

```
yarn application -status <Application ID>
yarn applicationattempt -list <Application ID>
yarn applicationattempt -status <Application Attempt ID>
yarn container -list <Application Attempt ID>
yarn container -status <Container ID>
```

## 8.10. Publishing Per-Framework Data in Applications

Developers can define the information they would like to record for their applications by composing `TimelineEntity` and `TimelineEvent` objects, and then putting the entities and events to the Timeline server via `TimelineClient`. For example:

```
// Create and start the Timeline client
TimelineClient client = TimelineClient.createTimelineClient();
client.init(conf);
client.start();

TimelineEntity entity = null;
// Compose the entity
try {
TimelinePutResponse response = client.putEntities(entity);
} catch (IOException e) {
// Handle the exception
} catch (YarnException e) {
// Handle the exception
}

// Stop the Timeline client
client.stop();
```

## 9. Using the YARN REST APIs to Manage Applications

This chapter describes how to use the YARN REST APIs to submit, monitor, and kill applications.

### Get an Application ID

You can use the New Application API to get an application ID, which can then be used to submit an application. For example:

```
curl -v -X POST 'http://localhost:8088/ws/v1/cluster/apps/new-application'
```

The response returns the application ID, and also includes the maximum resource capabilities available on the cluster. For example:

```
{
  application-id: application_1409421698529_0012",
  "maximum-resource-capability": {"memory": "8192", "vCores": "32"}
}
```

### Set Up an Application .json File

Before you submitting an application, you must set up a `.json` file with the parameters required by the application. This is analogous to creating your own ApplicationMaster. The application `.json` file contains all of the fields you are required to submit in order to launch the application.

The following is an example of an application `.json` file:

```
{
  "application-id": "application_1404203615263_0001",
  "application-name": "test",
  "am-container-spec": {
    {
      "local-resources": {
        {
          "entry": [
            {
              "key": "AppMaster.jar",
              "value": {
                "resource": "hdfs://hdfs-namenode:9000/user/testuser/DistributedShell/demo-app/AppMaster.jar",
                "type": "FILE",
                "visibility": "APPLICATION",
                "size": "43004",
                "timestamp": "1405452071209"
              }
            }
          ]
        }
      }
    }
  }
}
```





The response also includes the Location field, which you can use to get the status of the application (app ID). The following is an example of a returned Location code:

```
Location: http://localhost:8088/ws/v1/cluster/apps/  
application_1409421698529_0012
```

### Monitor an Application

You can use the Application State API to query the application state. To return only the state of a running application, use the following command format:

```
curl 'http://localhost:8088/ws/v1/cluster/apps/application_1409421698529_0012/  
state'
```

You can also use the value of the Location field (returned in the application submission response) to check the application status. For example:

```
curl -v 'http://localhost:8088/ws/v1/cluster/apps/  
application_1409421698529_0012'
```

You can use the following command format to check the logs:

```
yarn logs -appOwner 'dr.who' -applicationId application_1409421698529_0012 |  
less
```

### Kill an Application

You can also use the Application State API to kill an application by using a PUT operation to set the application state to KILLED. For example:

```
curl -v -X PUT -d '{"state": "KILLED"}' 'http://localhost:8088/ws/v1/cluster/  
apps/application_1409421698529_0012'
```

### Access the Apache YARN REST API Specification

For more information, see the Apache [YARN REST APIs](#) documentation.

# 10. Work-Preserving Restart

This chapter describes how to configure YARN to preserve the work of running applications in the event of a ResourceManager or NodeManager restart. Work-preserving ResourceManager and NodeManager restart ensures that node restart or fail-over is completely transparent to end-users, with minimal impact to running applications.

## 10.1. Configuring the ResourceManager for Work-Preserving Restart

Work-preserving ResourceManager restart ensures that applications continuously function during a ResourceManager restart with minimal impact to end-users. The overall concept is that the ResourceManager preserves application queue state in a pluggable state store, and reloads that state on restart. While the ResourceManager is down, ApplicationMasters and NodeManagers continuously poll the ResourceManager until it restarts. When the ResourceManager comes back online, the ApplicationMasters and NodeManagers re-register with the newly started ResourceManger. When the ResourceManager restarts, it also recovers container information by absorbing the container statuses sent from all NodeManagers. Thus, no work will be lost due to a ResourceManager crash-reboot event

To configure work-preserving restart for the ResourceManager, set the following properties in the `yarn-site.xml` file.

**Property:**

```
yarn.resourcemanager.recovery.enabled
```

**Value:**

```
true
```

**Description:**

Enables ResourceManager restart. The default value is `false`. If this configuration property is set to `true`, running applications will resume when the ResourceManager is restarted.

**Example:**

```
<property>
  <name>yarn.resourcemanager.recovery.enabled</name>
  <value>true</value>
</property>
```

**Property:**

```
yarn.resourcemanager.store.class
```

**Value:**

```
<specified_state_store>
```

**Description:**

Specifies the state-store used to store application and application-attempt state and other credential information to enable restart. The available state-store implementations are:

- `org.apache.hadoop.yarn.server.resourcemanager.recovery.FileSystemRMStateStore` – a state-store implementation persisting state to a file system such as HDFS. This is the default value.
- `org.apache.hadoop.yarn.server.resourcemanager.recovery.LevelDBRMStateStore` – a LevelDB-based state-store implementation.
- `org.apache.hadoop.yarn.server.resourcemanager.recovery.ZKRMStateStore` – a ZooKeeper-based state-store implementation.

**Example:**

```
<property>
  <name>yarn.resourcemanager.store.class</name>
  <value>org.apache.hadoop.yarn.server.resourcemanager.recovery.
FileSystemRMStateStore</value>
</property>
```

**FileSystemRMStateStore Configuration**

The following properties apply only if

`org.apache.hadoop.yarn.server.resourcemanager.recovery.FileSystemRMStateStore` has been specified as the state-store in the `yarn.resourcemanager.store.class` property.

**Property:**

`yarn.resourcemanager.fs.state-store.uri`

**Value:**

`<hadoop.tmp.dir>/yarn/system/rmstore`

**Description:**

The URI pointing to the location of the file system path where the RM state will be stored (e.g. `hdfs://localhost:9000/rmstore`). The default value is `<hadoop.tmp.dir>/yarn/system/rmstore`.

**Example:**

```
<property>
  <name>yarn.resourcemanager.fs.state-store.uri</name>
  <value>hdfs://localhost:9000/rmstore</value>
</property>
```

**Property:**

`yarn.resourcemanager.fs.state-store.retry-policy-spec`

**Value:**

2000, 500

**Description:**

The Hadoop FileSystem client retry policy specification. Hadoop FileSystem client retry is always enabled. This is specified in pairs of sleep-time and number-of-retries i.e. (t0, n0), (t1, n1), ..., the first n0 retries sleep t0 milliseconds on average, the following n1 retries sleep t1 milliseconds on average, and so on. The default value is (2000, 500).

**Example:**

```
<property>
  <name>yarn.resourcemanager.fs.state-store.retry-policy-spec</name>
  <value>2000, 500</value>
</property>
```

**LevelDbRMStateStore Configuration**

The following properties apply only if `org.apache.hadoop.yarn.server.resourcemanager.recovery.LevelDbRMStateStore` has been specified as the state-store in the `yarn.resourcemanager.store.class` property.

**Property:**

`yarn.resourcemanager.leveldb-state-store.path`

**Value:**

`<hadoop.tmp.dir>/yarn/system/rmstore`

**Description:**

The local path where the RM state will be stored.

**Example:**

```
<property>
  <name>yarn.resourcemanager.leveldb-state-store.path</name>
  <value><hadoop.tmp.dir>/yarn/system/rmstore</value>
</property>
```

**ZKRMStateStore Configuration**

The following properties apply only if `org.apache.hadoop.yarn.server.resourcemanager.recovery.ZKRMStateStore` has been specified as the state-store in the `yarn.resourcemanager.store.class` property.

**Property:**

`yarn.resourcemanager.zk-address`

**Value:**

`<host>:<port>`

**Description:**

A comma-separated list of <host>: <port> pairs, each corresponding to a server in a ZooKeeper cluster where the ResourceManager state will be stored.

**Example:**

```
<property>
  <name>yarn.resourcemanager.zk-address</name>
  <value>127.0.0.1:2181</value>
</property>
```

**Property:**

yarn.resourcemanager.zk-state-store.parent-path

**Value:**

/rmstore

**Description:**

The full path of the root znode where RM state will be stored. The default value is /rmstore.

**Example:**

```
<property>
  <name>yarn.resourcemanager.zk-state-store.parent-path</name>
  <value>/rmstore</value>
</property>
```

**Property:**

yarn.resourcemanager.zk-num-retries

**Value:**

500

**Description:**

The number of times the ZooKeeper-client running inside the ZKRMStateStore tries to connect to ZooKeeper in case of connection timeouts. The default value is 500.

**Example:**

```
<property>
  <name>yarn.resourcemanager.zk-num-retries</name>
  <value>500</value>
</property>
```

**Property:**

yarn.resourcemanager.zk-retry-interval-ms

**Value:**

2000

**Description:**

The interval in milliseconds between retries when connecting to a ZooKeeper server. The default value is 2 seconds.

**Example:**

```
<property>
  <name>yarn.resourcemanager.zk-retry-interval-ms</name>
  <value>2000</value>
</property>
```

**Property:**

yarn.resourcemanager.zk-timeout-ms

**Value:**

10000

**Description:**

The ZooKeeper session timeout in milliseconds. This configuration is used by the ZooKeeper server to determine when the session expires. Session expiration happens when the server does not hear from the client (i.e. no heartbeat) within the session timeout period specified by this property. The default value is 10 seconds.

**Example:**

```
<property>
  <name>yarn.resourcemanager.zk-timeout-ms</name>
  <value>10000</value>
</property>
```

**Property:**

yarn.resourcemanager.zk-acl

**Value:**

world:anyone:rwcd

**Description:**

The ACLs to be used for setting permissions on ZooKeeper znodes. The default value is world:anyone:rwcd. **Example**

```
<property>
  <name>yarn.resourcemanager.zk-acl</name>
  <value>world:anyone:rwcd</value>
</property>
```

## 10.2. Configuring NodeManagers for Work-Preserving Restart

NodeManager work-preserving enables a NodeManager to be restarted without losing the active containers running on the node. At a high level, the NodeManager stores any

necessary state to a local state store as it processes container management requests. When the NodeManager restarts, it recovers by first loading the state for various subsystems, and then lets those subsystems perform recovery using the loaded state.

To configure work-preserving restart for NodeManagers, set the following properties in the `yarn-site.xml` file on all NodeManagers in the cluster.

**Property:**

```
yarn.nodemanager.recovery.enabled
```

**Value:**

```
true
```

**Description:**

Enables the NodeManager to recover after a restart.

**Example:**

```
<property>
  <name>yarn.nodemanager.recovery.enabled</name>
  <value>true</value>
</property>
```

**Property:**

```
yarn.nodemanager.recovery.dir
```

**Value:**

```
<yarn_log_dir_prefix>/nodemanager/recovery-state
```

**Description:**

The local file system directory in which the NodeManager will store state information when recovery is enabled.

**Example:**

```
<property>
  <name>yarn.nodemanager.recovery.dir</name>
  <value><yarn_log_dir_prefix>/nodemanager/recovery-state</value>
</property>
```

You should also confirm that the `yarn.nodemanager.address` port is set to a non-zero value, e.g. 45454:

```
<property>
  <name>yarn.nodemanager.address</name>
  <value>0.0.0.0:45454</value>
</property>
```

# 11. Using the YARN CLI to View Logs for Running Applications

This chapter describes how to use the YARN CLI (Command Line Interface) to view log files for running applications. You can access container log files using the YARN ResourceManager web UI, but more options are available when you use the `yarn logs` CLI command.

## 11.1. View all Log Files for a Running Application

Use the following command format to view all logs for a running application:

```
yarn logs -applicationId <Application ID>
```

## 11.2. View a Specific Log Type for a Running Application

Use the following command format to view all logs of a particular type for a running application:

```
yarn logs -applicationId <Application ID> -log_files <log_file_type>
```

For example, to view only the `stderr` error logs:

```
yarn logs -applicationId <Application ID> -log_files stderr
```

The `-logFiles` option also supports Java regular expressions, so the following format would return all types of log files:

```
yarn logs -applicationId <Application ID> -log_files .*
```

## 11.3. View ApplicationMaster Log Files

Use the following command format to view all ApplicationMaster container log files for a running application:

```
yarn logs -applicationId <Application ID> -am ALL
```

Use the following command format to view only the first ApplicationMaster container log files:

```
yarn logs -applicationId <Application ID> -am 1
```

## 11.4. List Container IDs

Use the following command format to list all container IDs for a running application:

```
yarn logs -applicationId <Application ID> -show_application_log_info
```



## 11.5. View Log Files for One Container

Once you have the container IDs, you can use the following command format to list the log files for a particular container:

```
yarn logs -applicationId <Application ID> -containerId <Container ID>
```

## 11.6. Show Container Log File Information

Use the following command format to list all of the container log file names (types) for a running application:

```
yarn logs -applicationId <Application ID> -show_container_log_info
```

You can then use the `-logFiles` option to view a particular log type.

## 11.7. View a Portion of the Log Files for One Container

For large container log files, you can use the following command format to list only a portion of the log files for a particular container:

```
yarn logs -applicationId <Application ID> -containerId <Container ID> -size <bytes>
```

To view the first 1000 bytes:

```
yarn logs -applicationId <Application ID> -containerId <Container ID> -size 1000
```

To view the last 1000 bytes:

```
yarn logs -applicationId <Application ID> -containerId <Container ID> -size -1000
```

## 11.8. Download Logs for a Running Application

Use the following command format to download logs to a local folder:

```
yarn logs -applicationId <Application ID> -out <path_to_local_folder>
```

The container log files are organized in parent folders labeled with the applicable node ID.

## 11.9. Display Help for YARN Logs

To display Help for `yarn logs`, run the following command:

```
yarn logs -help
```